



# SPECIFICATIONS FOR TOILET PAPER HOLDERS

## EsSEN™

### Description

- Toilet paper holder
- Contemporary styling
- Chrome-plated finish
- Durable metal construction
- Concealed screw mounting
- Wall anchors and screws included
- Installs in minutes
- Compatible with standard tissue rolls
- Complements the appearance of your Premier faucets



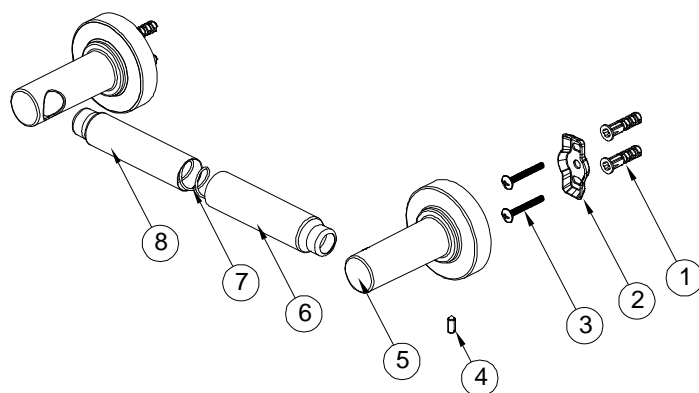
### Warranty

- Three-Year Limited Warranty

Refer to Premier warranty program for further details and restrictions.

### Model 107136

Toilet Paper Holder  
Chrome-Plated Finish



No.	Part	Material	Qty.
1	Plastic Anchor	Plastic	4
2	Mounting Bracket	Steel	2
3	Mounting Screw	Steel	4
4	Set Screw	Steel	2
5	Tissue Holder Post	Zinc	2
6	Tissue Inner Tube	Aluminum	1
7	Spring	Steel	1
8	Tissue Outer Tube	Aluminum	1

All dimensions are nominal.

