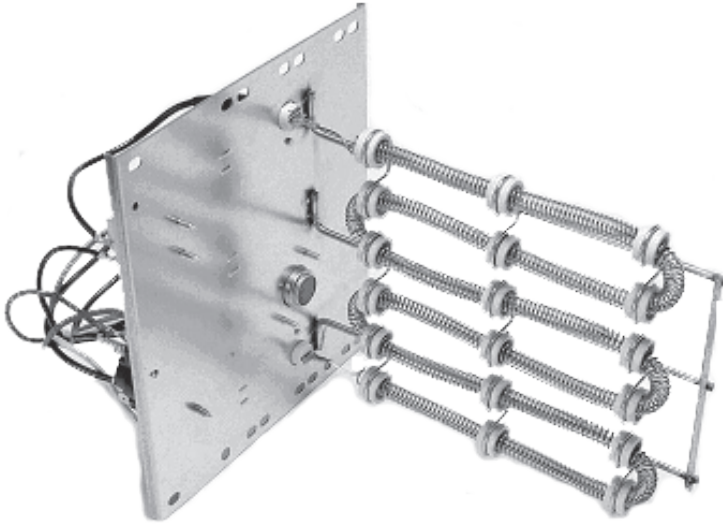




Air Conditioning & Heating

HKR / HKA / HKP / HKS

# ELECTRIC HEAT KITS FOR AIR HANDLERS AND PACKAGED ELECTRIC UNITS



### Standard Features

- Sequencers for better temperature control
- Multiple branch circuit capability
- Completely assembled and tested
- Control circuitry arranged to readily permit staging
- Factory-installed circuit breakers available on specific models (See Electrical Data)
- Fuse link secondary high-temperature limit control
- Plug-in wiring harness for ease of installation into air handler
- Rust-resistant nickel chromium heat elements
- ETL Listed

### Contents

AVPTC .....	3
ARPT .....	4
ARPF .....	6
ARUF-SF with HKS Electric Heat .....	10
ARUF with HKR Electric Heat .....	12
ASPF .....	16
ADPF .....	18
MBVC .....	19
MBR .....	20
GPC**H .....	21
GPC**M .....	23
GPH**H .....	25
GPH**M .....	27



\*Complete warranty details available from your local dealer or at [www.goodmanmfg.com](http://www.goodmanmfg.com).



NOMENCLATURE

	HKR		*	-05	*	A	
	1	2	3	4,5	11		
<b>Unit Type</b>	HKR Air Handlers & Packaged Units					<b>Revisions</b>	
	HKA Air Handlers					Engineering Revisions	
	HKP Packaged Units					<b>Circuit Breaker</b>	
<b>Phase</b>	None Single-Phase					None Single- or 3-Phase Kit; No Circuit Breaker	
	3 Three-Phase					C Single-Phase Kit w/ Circuit Breaker	
<b>Heating Capacity @ 240 Volts</b>							
5	4.75 kW	15	14.25 to 15.00 kW				
8	7.00 kW	20	19.00 to 19.60 kW				
10	9.50 kW						

	HKS		X	03	X	A	AA
	1	2	3	4	5	6,7	
<b>Unit Type</b>	HKR/ Heat Kit for Air Handlers					<b>Revisions</b>	
						Engineering Revisions	
<b>Phase</b>	X No circuit breaker					<b>Phase</b>	
	C Circuit Breaker					A Single Phase 208 V	
						B Single Phase 240 V	
						C Single Phase 208/240 V	
						D Three Phase 208 V	
						E Three Phase 240 V	
						F Three Phase 208/240 V	
						G Three Phase 460 V	
<b>Heating Capacity @ 240 Volts</b>						<b>Cabinet Size (MAX)</b>	
03	3.0 kW						C C Cabinet
05	4.5 kW						D D Cabinet
06	6.0 kW						X All Cabinet Sizes
08	8.0 kW						
10	9.6 kW						
15	14.4 kW						
19	19.2 k@ wth 150F limit						
20	19.2 kW with 170F limit						



## AIR HANDLER ELECTRICAL DATA — AVPTC

MODEL & HEAT KIT USAGE	CIRCUIT 1			CIRCUIT 2			SINGLE-POINT KIT	
	HEATER AMPS	MCA <sup>1</sup>	MOP <sup>2</sup>	HEATER AMPS	MCA <sup>1</sup>	MOP <sup>2</sup>	MCA <sup>1</sup>	MOP <sup>2</sup>
<b>AVPTC183014AA</b>	0 / 0	4.9 / 4.9	15 / 15	---	---	---	---	---
HKR-03*	10.8 / 12.5	18.4 / 20.5	20 / 25	---	---	---	---	---
HKR-05* / 05C*	17.2 / 19.8	26.3 / 29.6	30 / 30	---	---	---	---	---
HKR-06*	21.7 / 25.0	32.0 / 36.1	35 / 40	---	---	---	---	---
HKR-08* / -08C*	25.3 / 29.2	36.5 / 41.3	40 / 45	---	---	---	---	---
HKR-10* / -10C*	34.3 / 39.6	47.8 / 54.4	50 / 60	---	---	---	---	---
<b>AVPTC313714AA</b>	0 / 0	6.5 / 6.5	15 / 15	---	---	---	---	---
HKR-03*	10.8 / 12.5	20.0 / 22.1	20 / 25	---	---	---	---	---
HKR-05* / 05C*	17.2 / 19.8	27.9 / 31.2	30 / 35	---	---	---	---	---
HKR-06*	21.7 / 25.0	33.6 / 37.8	35 / 40	---	---	---	---	---
HKR-08* / -08C*	25.3 / 29.2	38.1 / 43.0	40 / 45	---	---	---	---	---
HKR-10* / -10C*	34.3 / 39.6	49.4 / 56.0	50 / 60	---	---	---	---	---
HKA-15C*	34.3 / 39.6	49.4 / 56.0	50 / 60	17.2 / 19.8	21.4 / 24.7	25 / 25	71/81	80 / 90
<b>AVPTC426014AA</b>	0 / 0	8.6 / 8.6	15 / 15	---	---	---	---	---
HKR-03*	10.8 / 12.5	24.3 / 22.2	25 / 25	---	---	---	---	---
HKR-05* / 05C*	17.2 / 19.8	30.1 / 33.4	35 / 35	---	---	---	---	---
HKR-06*	21.7 / 25.0	35.7 / 39.9	40 / 40	---	---	---	---	---
HKR-08* / -08C*	25.3 / 29.2	40.2 / 45.1	45 / 50	---	---	---	---	---
HKR-10* / -10C*	34.3 / 39.6	51.5 / 58.1	60 / 60	---	---	---	---	---
HKA-15C*	34.3 / 39.6	51.5 / 58.1	60 / 60	17.2 / 19.8	21.4 / 24.7	25 / 25	73/83	80 / 90
HKA-20C*	34.3 / 39.6	51.5 / 58.1	60 / 60	34.3 / 39.6	42.9 / 49.5	45 / 50	94/108	100 / 110

<sup>1</sup> Minimum Circuit Ampacity @ 208 / 240 V

<sup>2</sup> Maximum Overcurrent Protection Device @ 208 / 240 V

\* Revision level that may or may not be designated

C Circuit breaker option

--- indicates Not Required

^ Heat Kit requires three-phase power supply

Note: All HKR ampacities noted above include air handler motor amps, excluding three-phase models.

## HEATING kW CORRECTION FACTOR

SUPPLY VOLTAGE	240	230	220	210	208
CORRECTION FACTOR	1.00	0.92	0.84	0.77	0.75

Multiply the 240-volt heating capacity by correction factors.

## AIR HANDLER ELECTRICAL DATA — ARPT

MODEL & HEAT KIT USAGE	CIRCUIT 1			CIRCUIT 2			SINGLE-POINT KIT	
	HEATER AMPS	MCA <sup>1</sup>	MOP <sup>2</sup>	HEATER AMPS	MCA <sup>1</sup>	MOP <sup>2</sup>	MCA <sup>1</sup>	MOP <sup>2</sup>
<b>ARPT18B14AA</b>	0/0	2.4/2.4	15/15	---	---	---	---	---
HKS*03XC*	10.8/12.5	16/18	20/20	---	---	---	---	---
HKS*05XC*	17.3/20	24/27	25/30	---	---	---	---	---
HKS*06XC*	21.7/25	29/34	30/35	---	---	---	---	---
HKS*08XC*	28.9/33.3	34/39	40/45	---	---	---	---	---
HKS*10XC*	34.7/40	45/52	50/60	---	---	---	---	---
<b>ARPT24B14AA</b>	0/0	2.4/2.4	15/15	---	---	---	---	---
HKS*03XC*	10.8/12.5	16/18	20/20	---	---	---	---	---
HKS*05XC*	17.3/20	24/28	25/30	---	---	---	---	---
HKS*06XC*	21.7/25	30/34	30/35	---	---	---	---	---
HKS*08XC*	28.9/33.3	39/44	40/45	---	---	---	---	---
HKS*10XC*	34.7/40	46/53	50/60	---	---	---	---	---
HKSC15*##	34.7/40	46/53	50/60	17.3/20	22/25	25/30	68/78	70/80
<b>ARPT30B14AA</b>	0/0	2.4/2.4	15/15	---	---	---	---	---
HKS*03XC*	10.8/12.5	16/18	20/20	---	---	---	---	---
HKS*05XC*	17.3/20	24/28	25/30	---	---	---	---	---
HKS*06XC*	21.7/25	30/34	30/35	---	---	---	---	---
HKS*08XC*	28.9/33.3	39/44	40/45	---	---	---	---	---
HKS*10XC*	34.7/40	46/53	50/60	---	---	---	---	---
HKSC15*##	34.7/40	46/53	50/60	17.3/20	22/25	25/30	68/78	70/80
<b>ARPT36C14AA</b>	0/0	3.8/3.8	15/15	---	---	---	---	---
HKS*03XC*	10.8/12.5	18/20	20/20	---	---	---	---	---
HKS*05XC*	17.3/20	26/29	30/30	---	---	---	---	---
HKS*06XC*	21.7/25	32/36	35/40	---	---	---	---	---
HKS*08XC*	28.9/33.3	41/46	45/50	---	---	---	---	---
HKS*10XC*	34.7/40	48/54	50/60	---	---	---	---	---
HKSC15*##	34.7/40	48/54	50/60	17.3/20	22/25	25/30	70/80	70/80
HKSC19C##	34.7/40	48/54	50/60	34.7/40	44/50	45/60	91/105	100/110
HKSC15XF*	0/0	3.8/3.8	15/15	30/34.6	38/44	40/50	---	---
HKSC20XF*	0/0	3.8/3.8	15/15	37/43	47/54	50/60	---	---
<b>ARPT36D14AA</b>	0/0	3.8/3.8	15/15	---	---	---	---	---
HKS*03XC*	10.8/12.5	18/20	20/20	---	---	---	---	---
HKS*05XC*	17.3/20	26/29	30/30	---	---	---	---	---
HKS*06XC*	21.7/25	31/35	35/40	---	---	---	---	---
HKS*08XC*	28.9/33.3	40/46	40/50	---	---	---	---	---
HKS*10XC*	34.7/40	48/54	50/60	---	---	---	---	---
HKSC15*##	34.7/40	48/54	50/60	17.3/20	22/25	25/30	70/80	70/80
HKSC20D##	34.7/40	48/54	50/60	34.7/40	44/50	45/60	91/105	100/110
HKSC15XF*	0/0	3.8/3.8	15/15	30/34.6	38/44	40/50	---	---
HKSC20XF*	0/0	3.8/3.8	15/15	37/43	47/54	50/60	---	---

## AIR HANDLER ELECTRICAL DATA — ARPT (CONT.)

MODEL & HEAT KIT USAGE	CIRCUIT 1			CIRCUIT 2			SINGLE-POINT KIT	
	HEATER AMPS	MCA <sup>1</sup>	MOP <sup>2</sup>	HEATER AMPS	MCA <sup>1</sup>	MOP <sup>2</sup>	MCA <sup>1</sup>	MOP <sup>2</sup>
<b>ARPT42D14AA</b>	0/0	4.4/4.4	15/15	---	---	---	---	---
HKS*03XC*	10.8/12.5	18/20	20/25	---	---	---	---	---
HKS*05XC*	17.3/20	26/30	30/30	---	---	---	---	---
HKS*06XC*	21.7/25	32/36	35/40	---	---	---	---	---
HKS*08XC*	28.9/33.3	41/46	45/50	---	---	---	---	---
HKS*10XC*	34.7/40	48/55	50/60	---	---	---	---	---
HKSC15*##	34.7/40	48/55	50/60	17.3/20	22/25	25/30	71/81	80/90
HKSC20D##	34.7/40	48/55	50/60	34.7/40	44/50	45/60	92/106	100/110
HKSC15XF*	0/0	4.4/ 4.4	15/15	30/34.6	38/44	40/50	---	---
HKSC20XF*	0/0	4.4/ 4.4	15/15	37/43	47/54	50/60	---	---
<b>ARPT48D14AA</b>	0/0	4.4/4.4	15/15	---	---	---	---	---
HKS*03XC*	10.8/12.5	18/20	20/25	---	---	---	---	---
HKS*05XC*	17.3/20	26/30	30/30	---	---	---	---	---
HKS*06XC*	21.7/25	32/36	35/40	---	---	---	---	---
HKS*08XC*	28.9/33.3	41/46	45/50	---	---	---	---	---
HKS*10XC*	34.7/40	48/55	50/60	---	---	---	---	---
HKSC15*##	34.7/40	48/55	50/60	17.3/20	22/25	25/30	71/81	80/90
HKSC20D##	34.7/40	48/55	50/60	34.7/40	44/50	45/60	92/106	100/110
HKSC15XF*	0/0	4.4/ 4.4	15/15	30/34.6	38/44	40/50	---	---
HKSC20XF*	0/0	4.4/ 4.4	15/15	37/43	47/54	50/60	---	---
<b>ARPT60D14AA</b>	0/0	5.8/5.8	15/15	---	---	---	---	---
HKS*03XC*	10.8/12.5	20/22	20/25	---	---	---	---	---
HKS*05XC*	17.3/20	28/31	30/35	---	---	---	---	---
HKS*06XC*	21.7/25	33/37	35/40	---	---	---	---	---
HKS*08XC*	28.9/33.3	42/48	45/50	---	---	---	---	---
HKS*10XC*	34.7/40	50/56	50/60	---	---	---	---	---
HKSC15*##	34.7/40	50/56	50/60	17.3/20	22/25	25/30	72/82	80/90
HKSC20D##	34.7/40	50/56	50/60	34.7/40	44/50	45/60	94/107	100/110
HKSC15XF*	0/0	5.8/5.8	15/15	30/34.6	38/44	40/50	---	---
HKSC20XF*	0/0	5.8/5.8	15/15	37/43	47/54	50/60	---	---
HKSC25DC*	34.7/40	50/56	50/60	52/60	65/75	70/80	116/133	125/150

<sup>1</sup> Minimum Circuit Ampacity (Heater Amps + Motor Amps) X 1.25

\* Revision level that may or may not be designated

<sup>2</sup> Maximum Overcurrent Protection = 2.25 X Motor Amps + Heater Amps

--- indicates Not Required

## AIR HANDLER ELECTRICAL DATA — ARPF

AIR HANDLER MODEL	MOTOR		VOLTS-HERTZ-PHASE	HEATER KIT	CIRCUIT 1			CIRCUIT 2		
	AMP+	HP			HEATER AMPS	MCA <sup>1</sup>	MOP <sup>2</sup>	HEATER AMPS	MCA <sup>1</sup>	MOP <sup>2</sup>
ARPF182416AA ARPF182416BA	1.7	1/3	208/240-60-1	-----	0/0	2.1/2.1	15/15	----	----	----
				HKR-03*	10.8/12.5	16/18	20/20	----	----	----
				HKR-05*/-05C*	17.1/19.8	24/27	30/30	----	----	----
				HKR-06*	21.6/25.0	30/34	40/40	----	----	----
				HKR-08*/-08C*	25.2/29.1	34/39	40/40	----	----	----
				HKR-10*/-10C*	34.3/39.6	45/52	60/60	----	----	----
				HKR-15C*	34.3/39.6	45/52	60/60	17.1/19.8	22/25	30/30
ARPF182416CA	1.9	1/3	208/240-60-1	-----	0/0	2.4/2.4	15/15	----	----	----
				HKR-03*	10.8/12.5	16/18	20/20	----	----	----
				HKR-05*/-05C*	17.2/19.8	24/27	25/30	----	----	----
				HKR-06*	21.7/25.0	29/34	30/35	----	----	----
				HKR-08*/-08C*	25.3/29.2	34/39	35/40	----	----	----
				HKR-10*/-10C*	34.3/39.6	45/52	50/60	----	----	----
				HKR-15C*	34.3/39.6	45/52	50/60	17.2/19.8	21/25	25/25
ARPF193116AA ARPF193116BA	1.48	1/4	208/240-60-1	-----	0/0	1.9/1.9	15/15	----	----	----
				HKR-03*	10.8/12.5	15/17	20/20	----	----	----
				HKR-05*/-05C*	17.1/19.8	23/27	30/30	----	----	----
				HKR-06*	21.6/25.0	29/33	40/40	----	----	----
				HKR-08*/-08C*	25.2/29.1	33/38	40/40	----	----	----
				HKR-10*/-10C*	34.3/39.6	45/51	60/60	----	----	----
				HKR-15C*	34.3/39.6	45/51	60/60	17.1/19.8	22/25	30/30
ARPF193116CA	1.48	1/4	208/240-60-1	-----	0/0	1.9/1.9	15/15	----	----	----
				HKR-03*	10.8/12.5	15/17	20/20	----	----	----
				HKR-05*/-05C*	17.2/19.8	23/27	25/30	----	----	----
				HKR-06*	21.7/25.0	29/33	30/35	----	----	----
				HKR-08*/-08C*	25.3/29.2	33/38	35/40	----	----	----
				HKR-10*/-10C*	34.3/39.6	45/51	45/60	----	----	----
				HKR-15C*	34.3/39.6	45/51	45/60	17.2/19.8	21/25	25/25
ARPF303016AA ARPF303016BA	2.64	1/3	208/240-60-1	-----	0/0	3.3/3.3	15/15	----	----	----
				HKR-03*	10.8/12.5	17/19	20/20	----	----	----
				HKR-05*/-05C*	17.1/19.8	25/28	30/30	----	----	----
				HKR-06*	21.6/25.0	30/35	40/40	----	----	----
				HKR-08*/-08C*	25.2/29.1	35/40	40/40	----	----	----
				HKR-10*/-10C*	34.3/39.6	46/53	60/60	----	----	----
				HKR-15C*	34.3/39.6	46/53	60/60	17.1/19.8	22/25	30/30
				HKR-20C*	34.3/39.6	46/53	60/60	34.3/39.6	43/49	60/60
				HKR-21C*	37.9/43.8	51/58	60/60	37.9/43.8	48/55	60/60
				^HKR3-15*	0/0	3.3/3.3	15/15	31.2/36.1	39/45	60/60
^HKR3-20*	0/0	3.3/3.3	15/15	40.6/46.9	51/59	60/60				

<sup>1</sup> Minimum Circuit Ampacity @ 208 / 240 V

\* Revision level that may or may not be designated

^ Heat Kit requires three-phase power supply

<sup>2</sup> Maximum Overcurrent Protection Device @ 208 / 240 V

C Circuit breaker option

Note: All HKR ampacities noted above include air handler motor amps, excluding three-phase models.

## AIR HANDLER ELECTRICAL DATA — ARPF (CONT.)

AIR HANDLER MODEL	MOTOR		VOLTS-HERTZ-PHASE	HEATER KIT	CIRCUIT 1			CIRCUIT 2		
	AMP+	HP			HEATER AMPS	MCA <sup>1</sup>	MOP <sup>2</sup>	HEATER AMPS	MCA <sup>1</sup>	MOP <sup>2</sup>
ARPF303016CA	2.64	1/3	208/240-60-1	-----	0/0	3.3/3.3	15/15	----	----	----
				HKR-03*	10.8/12.5	17/19	20/20	----	----	----
				HKR-05*/-05C*	17.2/19.8	25/28	25/30	----	----	----
				HKR-06*	21.7/25.0	30/35	35/35	----	----	----
				HKR-08*/-08C*	25.3/29.2	35/40	35/40	----	----	----
				HKR-10*/-10C*	34.3/39.6	46/53	50/60	----	----	----
				15 HKR-15C*	34.3/39.6	46/53	50/60	17.2/19.8	21/25	25/25
				16 HKR-20C*	34.3/39.6	46/53	50/60	34.3/39.6	43/49	45/50
				17 HKR-21C*	37.9/43.8	51/58	60/60	37.9/43.8	47/55	50/60
				18 ^HKR3-15*	0/0	3.3/3.3	15/15	31.3/36.1	39/45	40/50
19 ^HKR3-20*	0/0	3.3/3.3	15/15	40.7/46.9	51/59	60/60				
ARPF363616AA ARPF363616BA	2.64	1/3	208/240-60-1	-----	0/0	3.3/3.3	15/15	----	----	----
				HKR-03*	10.8/12.5	17/19	20/20	----	----	----
				HKR-05*/-05C*	17.1/19.8	25/28	30/30	----	----	----
				HKR-06*	21.6/25.0	30/35	40/40	----	----	----
				HKR-08*/-08C*	25.2/29.1	35/40	40/40	----	----	----
				HKR-10*/-10C*	34.3/39.6	46/53	60/60	----	----	----
				HKR-15C*	34.3/39.6	46/53	60/60	17.1/19.8	22/25	30/30
				^HKR3-15*	0/0	3.3/3.3	15/15	31.2/36.1	39/45	60/60
ARPF363616CA	2.64	1/3	208/240-60-1	-----	0/0	3.3/3.3	15/15	----	----	----
				HKR-03*	10.8/12.5	17/19	20/20	----	----	----
				HKR-05*/-05C*	17.2/19.8	25/28	25/30	----	----	----
				HKR-06*	21.7/25.0	30/35	35/35	----	----	----
				HKR-08*/-08C*	25.3/29.2	35/40	35/40	----	----	----
				HKR-10*/-10C*	34.3/39.6	46/53	50/60	----	----	----
				HKR-15C*	34.3/39.6	46/53	50/60	17.2/19.8	21/25	25/25
				^HKR3-15*	0/0	3.3/3.3	15/15	31.3/36.1	39/45	40/50
ARPF364216AA ARPF364216AB ARPF364216AC ARPF364216BA	2.95	1/2	208/240-60-1	-----	0/0	3.7/3.7	15/15	----	----	----
				HKR-03*	10.8/12.5	17/19	20/20	----	----	----
				HKR-05*/-05C*	17.1/19.8	25/28	30/30	----	----	----
				HKR-06*	21.6/25.0	31/35	40/40	----	----	----
				HKR-08*/-08C*	25.2/29.1	35/40	40/40	----	----	----
				HKR-10*/-10C*	34.3/39.6	47/53	60/60	----	----	----
				HKR-15C*	34.3/39.6	47/53	60/60	17.1/19.8	22/25	30/30
				HKR-20C*	34.3/39.6	47/53	60/60	34.3/39.6	43/49	60/60
				HKR-21C*	37.9/43.8	51/58	60/60	37.9/43.8	48/55	60/60
				^HKR3-15*	0/0	3.7/3.7	15/15	31.2/36.1	39/45	60/60
^HKR3-20*	0/0	3.7/3.7	15/15	40.6/46.9	51/59	60/60				

<sup>1</sup> Minimum Circuit Ampacity @ 208 / 240 V

<sup>2</sup> Maximum Overcurrent Protection Device @ 208 / 240 V

\* Revision level that may or may not be designated

C Circuit breaker option

^ Heat Kit requires three-phase power supply

Note: All HKR ampacities noted above include air handler motor amps, excluding three-phase models.

AIR HANDLER ELECTRICAL DATA — ARPF (CONT.)

AIR HANDLER MODEL	MOTOR		VOLTS-HERTZ-PHASE	HEATER KIT	CIRCUIT 1			CIRCUIT 2		
	AMP+	HP			HEATER AMPS	MCA <sup>1</sup>	MOP <sup>2</sup>	HEATER AMPS	MCA <sup>1</sup>	MOP <sup>2</sup>
ARPF364216CA	3.12	1/2	208/240-60-1	-----	0/0	3.9/3.9	15/15	----	----	----
				HKR-03*	10.8/12.5	17/20	20/20	----	----	----
				HKR-05*/-05C*	17.2/19.8	25/29	30/30	----	----	----
				HKR-06*	21.7/25.0	31/35	35/40	----	----	----
				HKR-08*/-08C*	25.3/29.2	36/40	40/45	----	----	----
				HKR-10*/-10C*	34.3/39.6	47/53	50/60	----	----	----
				HKR-15C*	34.3/39.6	47/53	50/60	17.2/19.8	21/25	25/25
				HKR-20C*	34.3/39.6	47/53	50/60	34.3/39.6	43/49	45/50
				HKR-21C*	37.9/43.8	51/59	60/60	37.9/43.8	47/55	50/60
				^HKR3-15*	0/0	3.9/3.9	15/15	31.3/36.1	39/45	40/50
^HKR3-20*	0/0	3.9/3.9	15/15	40.7/46.9	51/59	60/60				
ARPF374316AA ARPF374316BA	3.39	1/2	208/240-60-1	-----	0/0	4.2/4.2	15/15	----	----	----
				HKR-03*	10.8/12.5	18/20	20/20	----	----	----
				HKR-05*/-05C*	17.1/19.8	26/29	30/30	----	----	----
				HKR-06*	21.6/25.0	31/35	40/40	----	----	----
				HKR-08*/-08C*	25.2/29.1	36/41	40/40	----	----	----
				HKR-10*/-10C*	34.3/39.6	47/54	60/60	----	----	----
				HKR-15C*	34.3/39.6	47/54	60/60	17.1/19.8	22/25	30/30
				HKR-20C*	34.3/39.6	47/54	60/60	34.3/39.6	43/49	60/60
				HKR-21C*	37.9/43.8	52/59	60/60	37.9/43.8	48/55	60/60
				^HKR3-15*	0/0	4.2/4.2	15/15	31.2/36.1	39/45	60/60
^HKR3-20*	0/0	4.2/4.2	15/15	40.6/46.9	51/59	60/60				
ARPF374316CA	3.39	1/2	208/240-60-1	-----	0/0	4.2/4.2	15/15	----	----	----
				HKR-03*	10.8/12.5	18/20	20/20	----	----	----
				HKR-05*/-05C*	17.2/19.8	26/29	30/30	----	----	----
				HKR-06*	21.7/25.0	31/35	35/40	----	----	----
				HKR-08*/-08C*	25.3/29.2	36/41	40/45	----	----	----
				HKR-10*/-10C*	34.3/39.6	47/54	50/60	----	----	----
				HKR-15C*	34.3/39.6	47/54	50/60	17.2/19.8	21/25	25/25
				HKR-20C*	34.3/39.6	47/54	50/60	34.3/39.6	43/49	45/50
				HKR-21C*	37.9/43.8	52/59	60/60	37.9/43.8	47/55	50/60
				^HKR3-15*	0/0	4.2/4.2	15/15	31.3/36.1	39/45	40/50
^HKR3-20*	0/0	4.2/4.2	15/15	40.7/46.9	51/59	60/60				
ARPF486016AA ARPF486016AB ARPF486016BA	4.3	3/4	208/240-60-1	-----	0/0	5.4/5.4	15/15	----	----	----
				HKR-03*	10.8/12.5	19/21	20/20	----	----	----
				HKR-05*/-05C*	17.1/19.8	27/30	30/30	----	----	----
				HKR-06*	21.6/25.0	32/37	40/40	----	----	----
				HKR-08*/-08C*	25.2/29.1	37/39	40/40	----	----	----
				HKR-10*/-10C*	34.3/39.6	48/55	60/60	----	----	----
				HKR-15C*	34.3/39.6	48/55	60/60	17.1/19.8	22/25	30/30
				HKR-20C*	34.3/39.6	48/55	60/60	34.3/39.6	43/49	60/60
				HKR-21C*	37.9/43.8	53/59	60/60	37.9/43.8	48/55	60/60
				^HKR3-15*	0/0	5.4/5.4	15/15	31.2/36.1	39/45	60/60
^HKR3-20*	0/0	5.4/5.4	15/15	40.6/46.9	51/59	60/60				

See Notes on the following page.



## AIR HANDLER ELECTRICAL DATA — ARPF (CONT.)

AIR HANDLER MODEL	MOTOR		VOLTS-HERTZ-PHASE	HEATER KIT	CIRCUIT 1			CIRCUIT 2		
	AMP+	HP			HEATER AMPS	MCA <sup>1</sup>	MOP <sup>2</sup>	HEATER AMPS	MCA <sup>1</sup>	MOP <sup>2</sup>
ARPF486016CA	4.06	3/4	208/240-60-1	-----	0/0	5.1/5.1	15/15	----	----	----
				HKR-03*	10.8/12.5	19/21	20/25	----	----	----
				HKR-05*/-05C*	17.2/19.8	27/30	30/30	----	----	----
				HKR-06*	21.7/25	32/36	35/40	----	----	----
				HKR-08*/-08C*	25.3/29.2	37/42	40/45	----	----	----
				HKR-10*/-10C*	34.3/39.6	48/55	50/60	----	----	----
				HKR-15C*	34.3/39.6	48/55	50/60	17.2/19.8	21/25	25/25
				HKR-20C*	34.3/39.6	48/55	50/60	34.3/39.6	43/49	45/50
				HKR-21C*	37.9/43.8	52/60	60/60	37.9/43.8	47/55	50/60
				^HKR3-15*	0/0	5.1/5.1	15/15	31.3/36.1	39/45	40/50
				^HKR3-20*	0/0	5.1/5.1	15/15	40.7/46.9	51/59	60/60
ARPF496116AA	4.3	3/4	208/240-60-1	-----	0/0	5.4/5.4	15/15	----	----	----
				HKR-03*	10.8/12.5	19/21	20/20	----	----	----
				HKR-05*/-05C*	17.1/19.8	27/30	30/30	----	----	----
				HKR-06*	21.6/25.0	32/37	40/40	----	----	----
				HKR-08*/-08C*	25.2/29.1	37/39	40/40	----	----	----
				HKR-10*/-10C*	34.3/39.6	48/55	60/60	----	----	----
				HKR-15C*	34.3/39.6	48/55	60/60	17.1/19.8	22/25	30/30
				HKR-20C*	34.3/39.6	48/55	60/60	34.3/39.6	43/49	60/60
				HKR-21C*	37.9/43.8	53/59	60/60	37.9/43.8	48/55	60/60
				^HKR3-15*	0/0	5.4/5.4	15/15	31.2/36.1	39/45	60/60
				^HKR3-20*	0/0	5.4/5.4	15/15	40.6/46.9	51/59	60/60
ARPF496116CA	4.06	3/4	208/240-60-1	-----	0/0	5.1/5.1	15/15	----	----	----
				HKR-03*	10.8/12.5	19/21	20/25	----	----	----
				HKR-05*/-05C*	17.2/19.8	27/30	30/30	----	----	----
				HKR-06*	21.7/25.0	32/36	35/40	----	----	----
				HKR-08*/-08C*	25.3/29.2	37/42	40/45	----	----	----
				HKR-10*/-10C*	34.3/39.6	48/55	50/60	----	----	----
				HKR-15C*	34.3/39.6	48/55	50/60	17.2/19.8	21/25	25/25
				HKR-20C*	34.3/39.6	48/55	50/60	34.3/39.6	43/49	45/50
				HKR-21C*	37.9/43.8	52/60	60/60	37.9/43.8	47/55	50/60
				HKR3-15*	0/0	5.1/5.1	15/15	31.3/36.1	39/45	40/50
				HKR3-20*	0/0	5.1/5.1	15/15	40.7/46.9	51/59	60/60

<sup>1</sup> Minimum Circuit Ampacity @ 208 / 240 V

<sup>2</sup> Maximum Overcurrent Protection Device @ 208 / 240 V

\* Revision level that may or may not be designated

C Circuit breaker option

^ Heat Kit requires three-phase power supply

Note: All HKR ampacities noted above include air handler motor amps, excluding three-phase models.

**AIR HANDLER ELECTRICAL DATA — ARUF-SF WITH HKS ELECTRIC HEAT**

MODEL & HEAT KIT USAGE	CIRCUIT 1			CIRCUIT 2			SINGLE-POINT KIT	
	HEATER AMPS	MCA <sup>1</sup>	MOP <sup>2</sup>	HEATER AMPS	MCA <sup>1</sup>	MOP <sup>2</sup>	MCA <sup>1</sup>	MOP <sup>2</sup>
<b>ARUF18B14AA</b>	0/0	2.4/2.4	15/15	---	---	---	---	---
HKS*03XC*	10.8/12.5	16/18	20/20	---	---	---	---	---
HKS*05XC*	17.3/20	24/28	25/30	---	---	---	---	---
HKS*06XC*	21.7/25	30/34	30/35	---	---	---	---	---
HKS*08XC*	28.9/33.3	39/44	40/45	---	---	---	---	---
HKS*10XC*	34.7/40	46/53	50/60	---	---	---	---	---
<b>ARUF24B14AA</b>	0/0	2.4/2.4	15/15	---	---	---	---	---
HKS*03XC*	10.8/12.5	16/18	20/20	---	---	---	---	---
HKS*05XC*	17.3/20	24/28	25/30	---	---	---	---	---
HKS*06XC*	21.7/25	30/34	30/35	---	---	---	---	---
HKS*08XC*	28.9/33.3	39/44	40/45	---	---	---	---	---
HKS*10XC*	34.7/40	46/53	50/60	---	---	---	---	---
<b>ARUF30B14AA</b>	0/0	2.4/2.4	15/15	---	---	---	---	---
HKS*03XC*	10.8/12.5	16/18	20/20	---	---	---	---	---
HKS*05XC*	17.3/20	24/28	25/30	---	---	---	---	---
HKS*06XC*	21.7/25	30/34	30/35	---	---	---	---	---
HKS*08XC*	28.9/33.3	39/44	40/45	---	---	---	---	---
HKS*10XC*	34.7/40	46/53	50/60	---	---	---	---	---
HKSC15*##	34.7/40	46/53	50/60	17.3/20	22/25	25/30	68/78	70/80
<b>ARUF36C14AA</b>	0/0	3.8/3.8	15/15	---	---	---	---	---
HKS*03XC*	10.8/12.5	18/20	20/20	---	---	---	---	---
HKS*05XC*	17.3/20	26/29	30/30	---	---	---	---	---
HKS*06XC*	21.7/25	31/35	35/40	---	---	---	---	---
HKS*08XC*	28.9/33.3	40/46	40/50	---	---	---	---	---
HKS*10XC*	34.7/40	48/54	50/60	---	---	---	---	---
HKSC15*##	34.7/40	48/54	50/60	17.3/20	22/25	25/30	70/80	70/80
HKSC19C##	34.7/40	48/54	50/60	34.7/40	44/50	45/60	91/105	100/110
HKSC15XF*	0/0	3.8/3.8	15/15	30/34.6	38/44	40/50	---	---
HKSC20XF*	0/0	3.8/3.8	15/15	37/43	47/54	50/60	---	---
<b>ARUF42C14AA</b>	0/0	3.8/3.8	15/15	---	---	---	---	---
HKS*03XC*	10.8/12.5	18/20	20/20	---	---	---	---	---
HKS*05XC*	17.3/20	26/29	30/30	---	---	---	---	---
HKS*06XC*	21.7/25	32/36	35/40	---	---	---	---	---
HKS*08XC*	28.9/33.3	41/46	45/50	---	---	---	---	---
HKS*10XC*	34.7/40	48/54	50/60	---	---	---	---	---
HKSC15*##	34.7/40	48/54	50/60	17.3/20	22/25	25/30	70/80	70/80
HKSC19C##	34.7/40	48/54	50/60	34.7/40	44/50	45/60	92/105	100/110
HKSC15XF*	0/0	3.8/3.8	15/15	30/34.6	38/44	40/50	---	---
HKSC20XF*	0/0	3.8/3.8	15/15	37/43	47/54	50/60	---	---

## AIR HANDLER ELECTRICAL DATA — ARUF-SF WITH HKS ELECTRIC HEAT (CONT.)

MODEL & HEAT KIT USAGE	CIRCUIT 1			CIRCUIT 2			SINGLE-POINT KIT	
	HEATER AMPS	MCA <sup>1</sup>	MOP <sup>2</sup>	HEATER AMPS	MCA <sup>1</sup>	MOP <sup>2</sup>	MCA <sup>1</sup>	MOP <sup>2</sup>
<b>ARUF48D14AA</b>	0/0	4.4/ 4.4	15/15	---	---	---	---	---
HKS*03XC*	10.8/12.5	18/20	20/25	---	---	---	---	---
HKS*05XC*	17.3/20	26/30	30/30	---	---	---	---	---
HKS*06XC*	21.7/25	32/36	35/40	---	---	---	---	---
HKS*08XC*	28.9/33.3	41/46	45/50	---	---	---	---	---
HKS*10XC*	34.7/40	48/55	50/60	---	---	---	---	---
HKSC15*##	34.7/40	48/55	50/60	17.3/20	22/25	25/30	71/81	80/90
HKSC20D##	34.7/40	48/55	50/60	34.7/40	44/50	45/60	92/106	100/110
HKSC15XF*	0/0	4.4/ 4.4	15/15	30/34.6	38/44	40/50	---	---
HKSC20XF*	0/0	4.4/ 4.4	15/15	37/43	47/54	50/60	---	---
<b>ARUF60D14AA</b>	0/0	5.8/5.8	15/15	---	---	---	---	---
HKS*03XC*	10.8/12.5	20/22	20/25	---	---	---	---	---
HKS*05XC*	17.3/20	28/31	30/35	---	---	---	---	---
HKS*06XC*	21.7/25	33/37	35/40	---	---	---	---	---
HKS*08XC*	28.9/33.3	42/48	45/50	---	---	---	---	---
HKS*10XC*	34.7/40	50/56	50/60	---	---	---	---	---
HKSC15*##	34.7/40	50/56	50/60	17.3/20	22/25	25/30	72/82	80/90
HKSC20D##	34.7/40	50/56	50/60	34.7/40	44/50	45/60	94/107	100/110
HKSC15XF*	0/0	5.8/5.8	15/15	30/34.6	38/44	40/50	---	---
HKSC20XF*	0/0	5.8/5.8	15/15	37/43	47/54	50/60	---	---
HKSC25DC*	34.7/40	50/56	50/60	52/60	65/75	70/80	116/133	125/150

<sup>1</sup> Minimum Circuit Ampacity (Heater Amps + Motor Amps) X 1.25

\* Revision level that may or may not be designated

<sup>2</sup> Maximum Overcurrent Protection = 2.25 X Motor Amps + Heater Amps

--- indicates Not Required

**AIR HANDLER ELECTRICAL DATA — ARUF with HKR ELECTRIC HEAT**

AIR HANDLER MODEL	MOTOR		VOLTS-HERTZ-PHASE	HEATER KIT	CIRCUIT 1			CIRCUIT 2		
	AMP+	HP			HEATER AMPS	MCA <sup>1</sup>	MOP <sup>2</sup>	HEATER AMPS	MCA <sup>1</sup>	MOP <sup>2</sup>
ARUF172916AA ARUF172916BA	1.7	1/3	208/240-60-1	-----	0/0	2.1/2.1	15/15	----	----	----
				HKR-03*	10.8/12.5	16/18	20/20	----	----	----
				HKR-05*/-05C*	17.1/19.8	24/27	30/30	----	----	----
				HKR-06*	21.6/25.0	30/34	40/40	----	----	----
				HKR-08*/-08C*	25.2/29.1	34/39	40/40	----	----	----
				HKR-10*/-10C*	34.3/39.6	45/52	60/60	----	----	----
ARUF172916CA	1.9	1/3	208/240-60-1	-----	0/0	2.4/2.4	15/15	----	----	----
				HKR-03*	10.8/12.5	16/18	20/20	----	----	----
				HKR-05*/-05C*	17.2/19.8	24/27	25/30	----	----	----
				HKR-06*	21.7/25.0	29/34	30/35	----	----	----
				HKR-08*/-08C*	25.3/29.2	34/39	35/40	----	----	----
				HKR-10*/-10C*	34.3/39.6	45/52	50/60	----	----	----
ARUF182416AA ARUF182416BA	1.7	1/3	208/240-60-1	-----	0/0	2.1/2.1	15/15	----	----	----
				HKR-03*	10.8/12.5	16/18	20/20	----	----	----
				HKR-05*/-05C*	17.1/19.8	24/27	30/30	----	----	----
				HKR-06*	21.6/25.0	30/34	40/40	----	----	----
				HKR-08*/-08C*	25.2/29.1	34/39	40/40	----	----	----
				HKR-10*/-10C*	34.3/39.6	45/52	60/60	----	----	----
ARUF182416CA	1.9	1/3	208/240-60-1	-----	0/0	2.4/2.4	15/15	----	----	----
				HKR-03*	10.8/12.5	16/18	20/20	----	----	----
				HKR-05*/-05C*	17.2/19.8	24/27	25/30	----	----	----
				HKR-06*	21.7/25.0	29/34	30/35	----	----	----
				HKR-08*/-08C*	25.3/29.2	34/39	35/40	----	----	----
				HKR-10*/-10C*	34.3/39.6	45/52	50/60	----	----	----
ARUF193116AA ARUF193116BA	1.48	1/4	208/240-60-1	-----	0/0	1.9/1.9	15/15	----	----	----
				HKR-03*	10.8/12.5	15/17	20/20	----	----	----
				HKR-05*/-05C*	17.1/19.8	23/27	30/30	----	----	----
				HKR-06*	21.6/25.0	29/33	40/40	----	----	----
				HKR-08*/-08C*	25.2/29.1	33/38	40/40	----	----	----
				HKR-10*/-10C*	34.3/39.6	45/51	60/60	----	----	----
ARUF193116CA	1.48	1/4	208/240-60-1	-----	0/0	1.9/1.9	15/15	----	----	----
				HKR-03*	10.8/12.5	15/17	20/20	----	----	----
				HKR-05*/-05C*	17.2/19.8	23/27	25/30	----	----	----
				HKR-06*	21.7/25.0	29/33	30/35	----	----	----
				HKR-08*/-08C*	25.3/29.2	33/38	35/40	----	----	----
				HKR-10*/-10C*	34.3/39.6	45/51	45/60	----	----	----
ARUF303016AA ARUF303016BA	2.64	1/3	208/240-60-1	-----	0/0	3.3/3.3	15/15	----	----	----
				HKR-03*	10.8/12.5	17/19	20/20	----	----	----
				HKR-05*/-05C*	17.1/19.8	25/28	30/30	----	----	----
				HKR-06*	21.6/25.0	30/35	40/40	----	----	----
				HKR-08*/-08C*	25.2/29.1	35/40	40/40	----	----	----
				-----	-----	-----	-----	-----	-----	-----

See Notes on Page 9.

**AIR HANDLER ELECTRICAL DATA — ARUF WITH HKR ELECTRIC HEAT (CONT.)**

AIR HANDLER MODEL	MOTOR		VOLTS-HERTZ-PHASE	HEATER KIT	CIRCUIT 1			CIRCUIT 2		
	AMP+	HP			HEATER AMPS	MCA <sup>1</sup>	MOP <sup>2</sup>	HEATER AMPS	MCA <sup>1</sup>	MOP <sup>2</sup>
ARUF303016AA ARUF303016BA	2.64	1/3	208/240-60-1	HKR-10*/-10C*	34.3/39.6	46/53	60/60	----	----	----
HKR-15C*				34.3/39.6	46/53	60/60	17.1/19.8	22/25	30/30	
HKR-20C*				34.3/39.6	46/53	60/60	34.3/39.6	43/49	60/60	
HKR-21C*				37.9/43.8	51/58	60/60	37.9/43.8	48/55	60/60	
^HKR3-15*				0/0	3.3/3.3	15/15	31.2/36.1	39/45	60/60	
^HKR3-20*				0/0	3.3/3.3	15/15	40.6/46.9	51/59	60/60	
ARUF303016CA	2.64	1/3	208/240-60-1	-----	0/0	3.3/3.3	15/15	----	----	----
HKR-03*				10.8/12.5	17/19	20/20	----	----	----	
HKR-05*/-05C*				17.2/19.8	25/28	25/30	----	----	----	
HKR-06*				21.7/25.0	30/35	35/35	----	----	----	
HKR-08*/-08C*				25.3/29.2	35/40	35/40	----	----	----	
HKR-10*/-10C*				34.3/39.6	46/53	50/60	----	----	----	
HKR-15C*				34.3/39.6	46/53	50/60	17.2/19.8	21/25	25/25	
HKR-20C*				34.3/39.6	46/53	50/60	34.3/39.6	43/49	45/50	
HKR-21C*				37.9/43.8	51/58	60/60	37.9/43.8	47/55	50/60	
^HKR3-15*				0/0	3.3/3.3	15/15	31.3/36.1	39/45	40/50	
^HKR3-20*				0/0	3.3/3.3	15/15	40.7/46.9	51/59	60/60	
ARUF363616AA	2.64	1/3	208/240-60-1	-----	0/0	3.3/3.3	15/15	----	----	----
HKR-03*				10.8/12.5	17/19	20/20	----	----	----	
HKR-05*/-05C*				17.1/19.8	25/28	30/30	----	----	----	
HKR-06*				21.6/25.0	30/35	40/40	----	----	----	
HKR-08*/-08C*				25.2/29.1	35/40	40/40	----	----	----	
HKR-10*/-10C*				34.3/39.6	46/53	60/60	----	----	----	
HKR-15C*				34.3/39.6	46/53	60/60	17.1/19.8	22/25	30/30	
^HKR3-15*				0/0	3.3/3.3	15/15	31.2/36.1	39/45	60/60	
ARUF363616BA	2.64	1/3	208/240-60-1	-----	0/0	3.3/3.3	15/15	----	----	----
HKR-03*				10.8/12.5	17/19	20/20	----	----	----	
HKR-05*/-05C*				17.1/19.8	25/28	30/30	----	----	----	
HKR-06*				21.6/25.0	30/35	40/40	----	----	----	
HKR-08*/-08C*				25.2/29.1	35/40	40/40	----	----	----	
HKR-10*/-10C*				34.3/39.6	46/53	60/60	----	----	----	
HKR-15C*				34.3/39.6	46/53	60/60	17.1/19.8	22/25	30/30	
^HKR3-15*				0/0	3.3/3.3	15/15	31.2/36.1	39/45	60/60	
ARUF363616CA	2.64	1/3	208/240-60-1	-----	0/0	3.3/3.3	15/15	----	----	----
HKR-03*				10.8/12.5	17/19	20/20	----	----	----	
HKR-05*/-05C*				17.2/19.8	25/28	25/30	----	----	----	
HKR-06*				21.7/25.0	30/35	35/35	----	----	----	
HKR-08*/-08C*				25.3/29.2	35/40	35/40	----	----	----	
HKR-10*/-10C*				34.3/39.6	46/53	50/60	----	----	----	
HKR-15C*				34.3/39.6	46/53	50/60	17.2/19.8	21/25	25/25	
^HKR3-15*				0/0	3.3/3.3	15/15	31.3/36.1	39/45	40/50	
ARUF364216AA ARUF364216AB ARUF364216AC	2.95	1/2	208/240-60-1	-----	0/0	3.7/3.7	15/15	----	----	----
HKR-03*				10.8/12.5	17/19	20/20	----	----	----	
HKR-05*/-05C*				17.1/19.8	25/28	30/30	----	----	----	
HKR-06*				21.6/25.0	31/35	40/40	----	----	----	
HKR-10*/-10C*				34.3/39.6	47/53	60/60	----	----	----	

See Notes on Page 9.

**AIR HANDLER ELECTRICAL DATA — ARUF WITH HKR ELECTRIC HEAT (CONT.)**

AIR HANDLER MODEL	MOTOR		VOLTS-HERTZ-PHASE	HEATER KIT	CIRCUIT 1			CIRCUIT 2		
	AMP+	HP			HEATER AMPS	MCA <sup>1</sup>	MOP <sup>2</sup>	HEATER AMPS	MCA <sup>1</sup>	MOP <sup>2</sup>
ARUF364216AA	2.95	1/2	208/240-60-1	HKR-15C*	34.3/39.6	47/53	60/60	17.1/19.8	22/25	30/30
ARUF364216AB				HKR-20C*	34.3/39.6	47/53	60/60	34.3/39.6	43/49	60/60
ARUF364216AC				HKR-21C*	37.9/43.8	51/58	60/60	37.9/43.8	48/55	60/60
				^HKR3-15*	0/0	3.7/3.7	15/15	31.2/36.1	39/45	60/60
				^HKR3-20*	0/0	3.7/3.7	15/15	40.6/46.9	51/59	60/60
ARUF364216BA	2.95	1/2	208/240-60-1	-----	0/0	3.7/3.7	15/15	----	----	----
				HKR-03*	10.8/12.5	17/19	20/20	----	----	----
				HKR-05*/-05C*	17.1/19.8	25/28	30/30	----	----	----
				HKR-06*	21.6/25.0	31/35	40/40	----	----	----
				HKR-08*/-08C*	25.2/29.1	35/40	40/40	----	----	----
				HKR-10*/-10C*	34.3/39.6	47/53	60/60	----	----	----
				HKR-15C*	34.3/39.6	47/53	60/60	17.1/19.8	22/25	30/30
				HKR-20C*	34.3/39.6	47/53	60/60	34.3/39.6	43/49	60/60
				HKR-21C*	37.9/43.8	51/58	60/60	37.9/43.8	48/55	60/60
				^HKR3-15*	0/0	3.7/3.7	15/15	31.2/36.1	39/45	60/60
				^HKR3-20*	0/0	3.7/3.7	15/15	40.6/46.9	51/59	60/60
ARUF364216CA	3.12	1/2	208/240-60-1	-----	0/0	3.7/3.9	15/15	----	----	----
				HKR-03*	10.8/12.5	17/20	20/20	----	----	----
				HKR-05*/-05C*	17.2/19.8	25/29	30/30	----	----	----
				HKR-06*	21.7/25.0	31/35	35/40	----	----	----
				HKR-08*/-08C*	25.3/29.2	35/40	40/45	----	----	----
				HKR-10*/-10C*	34.3/39.6	47/53	50/60	----	----	----
				HKR-15C*	34.3/39.6	47/53	50/60	17.1/19.8	21/25	25/25
				HKR-20C*	34.3/39.6	47/53	50/60	34.3/39.6	43/49	45/50
				HKR-21C*	37.9/43.8	51/59	60/60	37.9/43.8	47/55	50/60
				^HKR3-15*	0/0	3.7/3.9	15/15	31.3/36.1	39/45	40/50
				^HKR3-20*	0/0	3.7/3.9	15/15	40.7/46.9	51/59	60/60
ARUF374316AA	3.39	1/2	208/240-60-1	-----	0/0	4.2/4.2	15/15	----	----	----
ARUF374316BA				HKR-03*	10.8/12.5	18/20	20/20	----	----	----
				HKR-05*/-05C*	17.1/19.8	26/29	30/30	----	----	----
				HKR-06*	21.6/25.0	31/35	40/40	----	----	----
				HKR-08*/-08C*	25.2/29.1	36/41	40/40	----	----	----
				HKR-10*/-10C*	34.3/39.6	47/54	60/60	----	----	----
				HKR-15C*	34.3/39.6	47/54	60/60	17.1/19.8	22/25	30/30
				HKR-20C*	34.3/39.6	47/54	60/60	34.3/39.6	43/49	60/60
				HKR-21C*	37.9/43.8	52/59	60/60	37.9/43.8	48/55	60/60
				^HKR3-15*	0/0	4.2/4.2	15/15	31.2/36.1	39/45	60/60
				^HKR3-20*	0/0	4.2/4.2	15/15	40.6/46.9	51/59	60/60
ARUF374316CA	3.39	1/2	208/240-60-1	-----	0/0	4.2/4.2	15/15	----	----	----
				HKR-03*	10.8/12.5	18/20	20/20	----	----	----
				HKR-05*/-05C*	17.2/19.8	26/29	30/30	----	----	----
				HKR-06*	21.7/25.0	31/35	35/40	----	----	----
				HKR-08*/-08C*	25.3/29.2	36/41	40/45	----	----	----
				HKR-10*/-10C*	34.3/39.6	47/54	50/60	----	----	----

See Notes on Page 14.

**AIR HANDLER ELECTRICAL DATA — ARUF WITH HKR ELECTRIC HEAT (CONT.)**

AIR HANDLER MODEL	MOTOR		VOLTS-HERTZ-PHASE	HEATER KIT	CIRCUIT 1			CIRCUIT 2		
	AMP+	HP			HEATER AMPS	MCA <sup>1</sup>	MOP <sup>2</sup>	HEATER AMPS	MCA <sup>1</sup>	MOP <sup>2</sup>
ARUF374316CA	3.39	1/2	208/240-60-1	HKR-15C*	34.3/39.6	47/54	50/60	17.2/19.8	21/25	25/25
				HKR-20C*	34.3/39.6	47/54	50/60	34.3/39.6	43/49	45/50
				HKR-21C*	37.9/43.8	52/59	60/60	37.9/43.8	47/55	50/60
				^HKR3-15*	0/0	4.2/4.2	15/15	31.3/36.1	39/45	40/50
				^HKR3-20*	0/0	4.2/4.2	15/15	40.7/46.9	51/59	60/60
ARUF486016AA ARUF486016AB ARUF486016BA	4.3	3/4	208/240-60-1	-----	0/0	5.4/5.4	15/15	-----	-----	-----
				HKR-03*	10.8/12.5	19/21	20/20	-----	-----	-----
				HKR-05*/-05C*	17.1/19.8	27/30	30/30	-----	-----	-----
				HKR-06*	21.6/25.0	32/37	40/40	-----	-----	-----
				HKR-08*/-08C*	25.2/29.1	37/39	40/40	-----	-----	-----
				HKR-10*/-10C*	34.3/39.6	48/55	60/60	-----	-----	-----
				HKR-15C*	34.3/39.6	48/55	60/60	17.1/19.8	22/25	30/30
				HKR-20C*	34.3/39.6	48/55	60/60	34.3/39.6	43/49	60/60
				HKR-21C*	37.9/43.8	53/59	60/60	37.9/43.8	48/55	60/60
				^HKR3-15*	0/0	5.4/5.4	15/15	31.2/36.1	39/45	60/60
ARUF486016CA	4.06	3/4	208/240-60-1	-----	0/0	5.1/5.1	15/15	-----	-----	-----
				HKR-03*	10.8/12.5	19/21	20/25	-----	-----	-----
				HKR-05*/-05C*	17.2/19.8	27/30	30/30	-----	-----	-----
				HKR-06*	21.7/25	32/36	35/40	-----	-----	-----
				HKR-08*/-08C*	25.3/29.2	37/42	40/45	-----	-----	-----
				HKR-10*/-10C*	34.3/39.6	48/55	50/60	-----	-----	-----
				HKR-15C*	34.3/39.6	48/55	50/60	17.2/19.8	21/25	25/25
				HKR-20C*	34.3/39.6	48/55	50/60	34.3/39.6	43/49	45/50
				HKR-21C*	37.9/43.8	52/60	60/60	37.9/43.8	47/55	50/60
				^HKR3-15*	0/0	5.1/5.1	15/15	31.3/36.1	39/45	40/50
ARUF496116AA	4.3	3/4	208/240-60-1	-----	0/0	5.4/5.4	15/15	-----	-----	-----
				HKR-03*	10.8/12.5	19/21	20/20	-----	-----	-----
				HKR-05*/-05C*	17.1/19.8	27/30	30/30	-----	-----	-----
				HKR-06*	21.6/25.0	32/37	40/40	-----	-----	-----
				HKR-08*/-08C*	25.2/29.1	37/39	40/40	-----	-----	-----
				HKR-10*/-10C*	34.3/39.6	48/55	60/60	-----	-----	-----
				HKR-15C*	34.3/39.6	48/55	60/60	17.1/19.8	22/25	30/30
				HKR-20C*	34.3/39.6	48/55	60/60	34.3/39.6	43/49	60/60
				HKR-21C*	37.9/43.8	53/59	60/60	37.9/43.8	48/55	60/60
				HKR3-15*	0/0	5.4/5.4	15/15	31.2/36.1	39/45	60/60
ARUF496116CA	4.06	3/4	208/240-60-1	-----	0/0	5.1/5.1	15/15	-----	-----	-----
				HKR-03*	10.8/12.5	19/21	20/25	-----	-----	-----
				HKR-05*/-05C*	17.2/19.8	27/30	30/30	-----	-----	-----
				HKR-06*	21.7/25.0	32/36	35/40	-----	-----	-----
				HKR-08*/-08C*	25.3/29.2	37/42	40/45	-----	-----	-----
				HKR-10*/-10C*	34.3/39.6	48/55	50/60	-----	-----	-----
				HKR-15C*	34.3/39.6	48/55	50/60	17.2/19.8	21/25	25/25
				HKR-20C*	34.3/39.6	48/55	50/60	34.3/39.6	43/49	45/50
				HKR-21C*	37.9/43.8	52/60	60/60	37.9/43.8	47/55	50/60
				^HKR3-15*	0/0	5.1/5.1	15/15	31.3/36.1	39/45	40/50
ARUF496116CA	4.06	3/4	208/240-60-1	-----	0/0	5.4/5.4	15/15	-----	-----	-----
				HKR-03*	10.8/12.5	19/21	20/25	-----	-----	-----
				HKR-05*/-05C*	17.1/19.8	27/30	30/30	-----	-----	-----
				HKR-06*	21.6/25.0	32/37	40/40	-----	-----	-----
				HKR-08*/-08C*	25.2/29.1	37/39	40/40	-----	-----	-----
				HKR-10*/-10C*	34.3/39.6	48/55	60/60	-----	-----	-----
				HKR-15C*	34.3/39.6	48/55	60/60	17.1/19.8	22/25	30/30
				HKR-20C*	34.3/39.6	48/55	60/60	34.3/39.6	43/49	60/60
				HKR-21C*	37.9/43.8	53/59	60/60	37.9/43.8	48/55	60/60
				HKR3-15*	0/0	5.4/5.4	15/15	31.2/36.1	39/45	60/60
ARUF496116CA	4.06	3/4	208/240-60-1	-----	0/0	5.1/5.1	15/15	-----	-----	-----
				HKR-03*	10.8/12.5	19/21	20/25	-----	-----	-----
				HKR-05*/-05C*	17.2/19.8	27/30	30/30	-----	-----	-----
				HKR-06*	21.7/25.0	32/36	35/40	-----	-----	-----
				HKR-08*/-08C*	25.3/29.2	37/42	40/45	-----	-----	-----
				HKR-10*/-10C*	34.3/39.6	48/55	50/60	-----	-----	-----
				HKR-15C*	34.3/39.6	48/55	50/60	17.2/19.8	21/25	25/25
				HKR-20C*	34.3/39.6	48/55	50/60	34.3/39.6	43/49	45/50
				HKR-21C*	37.9/43.8	52/60	60/60	37.9/43.8	47/55	50/60
				^HKR3-15*	0/0	5.1/5.1	15/15	31.3/36.1	39/45	40/50
ARUF496116CA	4.06	3/4	208/240-60-1	-----	0/0	5.4/5.4	15/15	-----	-----	-----
				HKR-03*	10.8/12.5	19/21	20/25	-----	-----	-----
				HKR-05*/-05C*	17.1/19.8	27/30	30/30	-----	-----	-----
				HKR-06*	21.6/25.0	32/37	40/40	-----	-----	-----
				HKR-08*/-08C*	25.2/29.1	37/39	40/40	-----	-----	-----
				HKR-10*/-10C*	34.3/39.6	48/55	60/60	-----	-----	-----
				HKR-15C*	34.3/39.6	48/55	60/60	17.1/19.8	22/25	30/30
				HKR-20C*	34.3/39.6	48/55	60/60	34.3/39.6	43/49	60/60
				HKR-21C*	37.9/43.8	53/59	60/60	37.9/43.8	48/55	60/60
				HKR3-15*	0/0	5.4/5.4	15/15	31.2/36.1	39/45	60/60
ARUF496116CA	4.06	3/4	208/240-60-1	-----	0/0	5.1/5.1	15/15	-----	-----	-----
				HKR-03*	10.8/12.5	19/21	20/25	-----	-----	-----
				HKR-05*/-05C*	17.2/19.8	27/30	30/30	-----	-----	-----
				HKR-06*	21.7/25.0	32/36	35/40	-----	-----	-----
				HKR-08*/-08C*	25.3/29.2	37/42	40/45	-----	-----	-----
				HKR-10*/-10C*	34.3/39.6	48/55	50/60	-----	-----	-----
				HKR-15C*	34.3/39.6	48/55	50/60	17.2/19.8	21/25	25/25
				HKR-20C*	34.3/39.6	48/55	50/60	34.3/39.6	43/49	45/50
				HKR-21C*	37.9/43.8	52/60	60/60	37.9/43.8	47/55	50/60
				^HKR3-15*	0/0	5.1/5.1	15/15	31.3/36.1	39/45	40/50
ARUF496116CA	4.06	3/4	208/240-60-1	-----	0/0	5.4/5.4	15/15	-----	-----	-----
				HKR-03*	10.8/12.5	19/21	20/25	-----	-----	-----
				HKR-05*/-05C*	17.1/19.8	27/30	30/30	-----	-----	-----
				HKR-06*	21.6/25.0	32/37	40/40	-----	-----	-----
				HKR-08*/-08C*	25.2/29.1	37/39	40/40	-----	-----	-----
				HKR-10*/-10C*	34.3/39.6	48/55	60/60	-----	-----	-----
				HKR-15C*	34.3/39.6	48/55	60/60	17.1/19.8	22/25	30/30
				HKR-20C*	34.3/39.6	48/55	60/60	34.3/39.6	43/49	60/60
				HKR-21C*	37.9/43.8	53/59	60/60	37.9/43.8	48/55	60/60
				HKR3-15*	0/0	5.4/5.4	15/15	31.2/36.1	39/45	60/60

See Notes on the following page.

## AIR HANDLER ELECTRICAL DATA — ASPF

MODEL & HEAT KIT USAGE	CIRCUIT 1			CIRCUIT 2			SINGLE-POINT KIT	
	HEATER AMPS	MCA <sup>1</sup>	MOP <sup>2</sup>	HEATER AMPS	MCA <sup>1</sup>	MOP <sup>2</sup>	MCA <sup>1</sup>	MOP <sup>2</sup>
<b>ASPF183016B*</b>	<b>0 / 0</b>	<b>3.1 / 3.1</b>	<b>15 / 15</b>	---	---	---	---	---
HKR-03*	10.8 / 12.5	17 / 19	20 / 20	---	---	---	--	--
HKR-05* / -05C*	17.1 / 19.8	27 / 30	30 / 30	---	---	---	--	--
HKR-06*	21.6 / 25.0	32 / 37	40 / 40	---	---	---	--	--
HKR-08* / -08C*	25.3 / 29.2	37 / 39	40 / 40	---	---	---	--	--
HKR-10* / -10C*	34.3 / 39.6	48 / 55	60 / 60	---	---	---	--	--
HKA-15C*	34.3 / 39.6	46 / 53	60 / 60	17.2 / 19.8	21 / 25	30 / 30	67/77	70 / 80
^HKR3-15*	0 / 0	3.1 / 3.1	15 / 15	31.2 / 36.1	39 / 45	60 / 60	--	--
<b>ASPF183016D*</b>	<b>0 / 0</b>	<b>3.6 / 3.6</b>	<b>15 / 15</b>	---	---	---	---	---
HKR-03*	10.8 / 12.5	17 / 19	20 / 20	---	---	---	--	--
HKR-05* / -05C*	17.2 / 19.8	25 / 28	30 / 30	---	---	---	--	--
HKR-06*	21.6 / 25.0	31 / 35	35 / 35	---	---	---	--	--
HKR-08* / -08C*	25.3 / 29.2	35 / 40	40 / 45	---	---	---	--	--
HKR-10* / -10C*	34.3 / 39.6	47 / 53	50 / 60	---	---	---	--	--
HKA-15C*	34.3 / 39.6	47 / 53	50 / 60	17.2 / 19.8	21 / 25	25 / 25	68/78	70 / 80
^HKR3-15*	0 / 0	3.6 / 3.6	15 / 15	31.2 / 36.1	39 / 45	40 / 50	--	--
<b>ASPF303616**</b>	<b>0 / 0</b>	<b>3.8 / 3.8</b>	<b>15 / 15</b>	---	---	---	--	--
HKR-03*	10.8 / 12.5	15 / 17	20 / 20	---	---	---	--	--
HKR-05* / -05C*	17.1 / 19.8	24 / 27	30 / 30	---	---	---	--	--
HKR-06*	21.6 / 25.0	32 / 37	40 / 40	---	---	---	--	--
HKR-08* / -08C*	25.3 / 29.2	35 / 40	40 / 40	---	---	---	--	--
HKR-10* / -10C*	34.3 / 39.6	48 / 55	60 / 60	---	---	---	--	--
HKA-15C*	34.3 / 39.6	46 / 53	60 / 60	17.2 / 19.8	21 / 25	30 / 30	68/78	70 / 80
HKA-20C*	34.3 / 39.6	51 / 57	60 / 60	34.3 / 39.6	43 / 50	60 / 60	90/103	90 / 110
^HKR3-15*	0 / 0	3.8 / 3.8	15 / 15	31.2 / 36.1	39 / 45	60 / 60	--	--
^HKR3-20*	0 / 0	3.8 / 3.8	15 / 15	40.6 / 46.9	51 / 59	60 / 60	--	--
<b>ASPF313716A*</b>	<b>0 / 0</b>	<b>3.8 / 3.8</b>	<b>15 / 15</b>	---	---	---	---	---
HKR-03*	10.8 / 12.5	15 / 17	20 / 20	---	---	---	---	---
HKR-05* / -05C*	17.1 / 19.8	24 / 27	30 / 30	---	---	---	---	---
HKR-06*	21.6 / 25.0	32 / 37	40 / 40	---	---	---	---	---
HKR-08* / -08C*	25.3 / 29.2	35 / 40	40 / 40	---	---	---	---	---
HKR-10* / -10C*	34.3 / 39.6	48 / 55	60 / 60	---	---	---	---	---
HKA-15C*	34.3 / 39.6	46 / 53	60 / 60	17.2 / 19.8	21 / 25	30 / 30	68/78	70 / 80
HKA-20C*	34.3 / 39.6	51 / 57	60 / 60	34.3 / 39.6	43 / 50	60 / 60	90/103	90 / 110
^HKR3-15*	0 / 0	3.8 / 3.8	15 / 15	31.2 / 36.1	39 / 45	60 / 60	--	--
^HKR3-20*	0 / 0	3.8 / 3.8	15 / 15	40.6 / 46.9	51 / 59	60 / 60	--	--

<sup>1</sup> Minimum Circuit Ampacity @ 208 / 240 V

<sup>2</sup> Maximum Overcurrent Protection Device @ 208 / 240 V

\* Revision level that may or may not be designated

C Circuit breaker option CA is for 208V and CB is for 240V

--- indicates Not Required

^ Heat Kit requires three-phase power supply

Note: All HKR ampacities noted above include air handler motor amps, excluding three-phase models.



## AIR HANDLER ELECTRICAL DATA — ASPF (CONT.)

MODEL & HEAT KIT USAGE	CIRCUIT 1			CIRCUIT 2			SINGLE-POINT KIT	
	HEATER AMPS	MCA <sup>1</sup>	MOP <sup>2</sup>	HEATER AMPS	MCA <sup>1</sup>	MOP <sup>2</sup>	MCA <sup>1</sup>	MOP <sup>2</sup>
<b>ASPF313716D*</b>	<b>0 / 0</b>	<b>3.9 / 3.9</b>	<b>15 / 15</b>	---	---	---	---	---
HKR-03*	10.8 / 12.5	17 / 20	20 / 20	---	---	---	---	---
HKR-05* / -05C*	17.2 / 19.8	25 / 29	30 / 30	---	---	---	---	---
HKR-06*	21.6 / 25.0	31 / 35	35 / 40	---	---	---	---	---
HKR-08* / -08C*	25.3 / 29.2	35 / 40	40 / 45	---	---	---	---	---
HKR-10* / -10C*	34.3 / 39.6	47 / 53	50 / 60	---	---	---	---	---
HKA-15C*	34.3 / 39.6	47 / 53	50 / 60	17.2 / 19.8	21 / 25	25 / 25	68/78	70 / 80
HKA-20C*	34.3 / 39.6	47 / 53	50 / 60	34.3 / 39.6	43 / 49	45 / 50	90/103	90 / 110
^HKR3-15*	0 / 0	3.9 / 3.9	15 / 15	31.2 / 36.1	39 / 45	40 / 50	--	--
^HKR3-20*	0 / 0	3.9 / 3.9	15 / 15	40.6 / 46.9	51 / 59	60 / 60	--	--
<b>ASPF426016B*</b>	<b>0 / 0</b>	<b>5.3 / 5.3</b>	<b>15 / 15</b>	---	---	---	---	---
HKR-03*	10.8 / 12.5	15 / 17	20 / 20	---	---	---	---	---
HKR-05* / -05C*	17.1 / 19.8	24 / 27	30 / 30	---	---	---	---	---
HKR-06*	21.6 / 25.0	32 / 37	40 / 40	---	---	---	---	---
HKR-08* / -08C*	25.3 / 29.2	35 / 40	40 / 40	---	---	---	---	---
HKR-10* / -10C*	34.3 / 39.6	46 / 53	60 / 60	---	---	---	---	---
HKA-15C*	34.3 / 39.6	51 / 57	60 / 60	17.2 / 19.8	21 / 25	30 / 30	70/80	70 / 80
HKA-20C*	34.3 / 39.6	51 / 57	60 / 60	34.3 / 39.6	43 / 50	60 / 60	91/104	100 / 110
^HKR3-15*	0 / 0	5.3 / 5.3	15 / 15	31.2 / 36.1	39 / 45	60 / 60	--	--
^HKR3-20*	0 / 0	5.3 / 5.3	15 / 15	40.6 / 46.9	51 / 59	60 / 60	--	--
<b>ASPF426016D*</b>	<b>0 / 0</b>	<b>6.4 / 6.4</b>	<b>15 / 15</b>	---	---	---	---	---
HKR-03*	10.8 / 12.5	20 / 22	20 / 25	---	---	---	---	---
HKR-05* / -05C*	17.2 / 19.8	28 / 31	30 / 35	---	---	---	---	---
HKR-06*	21.6 / 25.0	33 / 38	35 / 40	---	---	---	---	---
HKR-08* / -08C*	25.3 / 29.2	38 / 43	40 / 45	---	---	---	---	---
HKR-10* / -10C*	34.3 / 39.6	49 / 56	50 / 60	---	---	---	---	---
HKA-15C*	34.3 / 39.6	49 / 56	50 / 60	17.2 / 19.8	21 / 25	25 / 25	71/81	80 / 90
HKA-20C*	34.3 / 39.6	49 / 56	50 / 60	34.3 / 39.6	43 / 49	45 / 50	92/105	100 / 110
^HKR3-15*	0 / 0	6.4 / 6.4	15 / 15	31.2 / 36.1	39 / 45	40 / 50	--	--
^HKR3-20*	0 / 0	6.4 / 6.4	15 / 15	40.6 / 46.9	51 / 59	60 / 60	--	--

<sup>1</sup> Minimum Circuit Ampacity @ 208 / 240 V

<sup>2</sup> Maximum Overcurrent Protection Device @ 208 / 240 V

\* Revision level that may or may not be designated

C Circuit breaker option CA is for 208V and CB is for 240V

--- indicates Not Required

^ Heat Kit requires three-phase power supply

Note: All HKR ampacities noted above include air handler motor amps, excluding three-phase models.

## AIR HANDLER ELECTRICAL DATA — ADPF

HEATER KIT	CIRCUIT 1			CIRCUIT 2		
	HEATER AMPS	MCA <sup>1</sup>	MOP <sup>2</sup>	HEATER AMPS	MCA <sup>1</sup>	MOP <sup>2</sup>
ADPF182416AA/BA	0/0	2.1/2.1	15/15			
HKR-03*	10.8/12.5	16/18	20/20	----	----	----
HKR-05*/-05C*	17.1/19.8	24/27	30/30	----	----	----
HKR-06*	21.6/25.0	30/34	40/40	----	----	----
HKR-08*/-08C*	25.2/29.1	34/39	40/40	----	----	----
HKR-10*/-10C*	34.3/39.6	45/52	60/60	----	----	----
HKA-15C*	34.3/39.6	45/52	60/60	17.1/19.8	22/25	30/30
ADPF182416CA	0/0	2.4/2.4	15/15			
HKR-03*	10.8/12.5	16/18	20/20	----	----	----
HKR-05*/-05C*	17.2/19.8	24/27	25/30	----	----	----
HKR-06*	21.7/25	29/34	30/35	----	----	----
HKR-08*/-08C*	25.3/29.2	34/39	35/40	----	----	----
HKR-10*/-10C*	34.3/39.6	45/52	50/60	----	----	----
HKA-15C*	34.3/39.6	45/52	50/60	17.2/19.8	21/25	25/25
ADPF304216AA/AB/AC/BA	0/0	3.7/3.7	15/15			
HKR-03*	10.8/12.5	17/19	20/20	----	----	----
HKR-05*/-05C*	17.1/19.8	25/28	30/30	----	----	----
HKR-06*	21.6/25.0	31/35	40/40	----	----	----
HKR-08*/-08C*	25.2/29.1	35/40	40/40	----	----	----
HKR-10*/-10C*	34.3/39.6	47/53	60/60	----	----	----
HKA-15C*	34.3/39.6	47/53	60/60	17.1/19.8	22/25	30/30
HKA-20C*	34.3/39.6	47/53	60/60	34.3/39.6	43/49	60/60
^HKR3-15*	0/0	3.7/3.7	15/15	31.2/36.1	39/45	60/60
^HKR3-20*	0/0	3.7/3.7	15/15	40.6/46.9	51/59	60/60
ADPF304216CA	0/0	3.9/3.9	15/15			
HKR-03*	10.8/12.5	17/20	20/20	----	----	----
HKR-05*/-05C*	17.2/19.8	25/29	30/30	----	----	----
HKR-06*	21.7/25.0	31/35	35/40	----	----	----
HKR-08*/-08C*	25.3/29.2	36/40	40/45	----	----	----
HKR-10*/-10C*	34.3/39.6	47/53	50/60	----	----	----
HKA-15C*	34.3/39.6	47/53	50/60	17.2/19.8	22/25	25/25
HKA-20C*	34.3/39.6	47/53	50/60	34.3/39.6	43/49	45/50
^HKR3-15*	0/0	3.9/3.9	15/15	31.3/36.1	39/45	40/50
^HKR3-20*	0/0	3.9/3.9	15/15	40.7/46.9	51/59	60/60
ADPF486016AA/AB/BA	0/0	5.4/5.4	15/15			
HKR-03*	10.8/12.5	19/21	20/20	----	----	----
HKR-05*/-05C*	17.1/19.8	27/30	30/30	----	----	----
HKR-06*	21.6/25.0	32/37	40/40	----	----	----
HKR-08*/-08C*	25.2/29.1	37/39	40/40	----	----	----
HKR-10*/-10C*	34.3/39.6	48/55	60/60	----	----	----
HKA-15C*	34.3/39.6	48/55	60/60	17.1/19.8	22/25	30/30
HKA-20C*	34.3/39.6	48/55	60/60	34.3/39.6	43/49	60/60
^HKR3-15*	0/0	5.4/5.4	15/15	31.2/36.1	39/45	60/60
^HKR3-20*	0/0	5.4/5.4	15/15	40.6/46.9	51/59	60/60
ADPF486016CA	0/0	5.1/5.1	15/15			
HKR03*	10.8/12.5	19/21	20/25	----	----	----
HKR-05*/05C*	17.2/19.8	27/30	30/30	----	----	----
HKR-06*	21.7/25	32/36	35/40	----	----	----
HKR-08*/08C*	25.3/29.2	37/42	40/45	----	----	----
HKR-10*/10C*	34.3/39.6	48/55	50/60	----	----	----
HKA-15C*	34.3/39.6	48/55	50/60	17.2/19.8	21/25	25/25
HKA-20C*	34.3/39.6	48/55	50/60	34.3/39.6	43/49	45/50
HKR3-15*	0/0	5.1/5.1	15/15	31.3/36.1	39/45	40/50
HKR3-20*	0/0	5.1/5.1	15/15	40.7/46.9	51/59	60/60

See Notes on the previous page.

## AIR HANDLER ELECTRICAL DATA — MBVC

MODEL & HEAT KIT USAGE	CIRCUIT 1			CIRCUIT 2			SINGLE-POINT KIT	
	HEATER AMPS	MCA <sup>1</sup>	MOP <sup>2</sup>	HEATER AMPS	MCA <sup>1</sup>	MOP <sup>2</sup>	MCA <sup>1</sup>	MOP <sup>2</sup>
<b>MBVC1200AA-1A*</b>	0 / 0	4.3 / 4.3	15 / 15	---	---	---	---	---
HKR-03*	10.8 / 12.5	17.8 / 19.9	20 / 20	---	---	---	---	---
HKR-05* / 05C*	17.2 / 19.8	25.7 / 29.0	30 / 30	---	---	---	---	---
HKR-06*	21.7 / 25.0	31.3 / 35.5	35 / 40	---	---	---	---	---
HKR-08* / -08C*	25.3 / 29.2	35.8 / 40.7	40 / 45	---	---	---	---	---
HKR-10* / -10C*	34.3 / 39.6	47.1 / 53.7	50 / 60	---	---	---	---	---
HKA-15C*	34.3 / 39.6	47.1 / 53.7	50 / 60	17.2 / 19.8	21.4 / 24.7	25 / 25	69/79	70 / 80
<b>MBVC1600AA-1A*</b>	0 / 0	6.3 / 6.3	15 / 15	---	---	---	---	---
HKR-03*	10.8 / 12.5	19.8 / 21.9	20 / 25	---	---	---	---	---
HKR-05* / 05C*	17.2 / 19.8	27.7 / 31.0	30 / 35	---	---	---	---	---
HKR-06*	21.7 / 25.0	33.3 / 37.5	35 / 40	---	---	---	---	---
HKR-08* / -08C*	25.3 / 29.2	37.8 / 42.7	40 / 45	---	---	---	---	---
HKR-10* / -10C*	34.3 / 39.6	49.1 / 55.7	50 / 60	---	---	---	---	---
HKA-15C*	34.3 / 39.6	49.1 / 55.7	50 / 60	17.2 / 19.8	21.4 / 24.7	25 / 25	71/81	80 / 90
<b>MBVC2000AA-1A*</b>	0 / 0	5.8 / 5.8	15 / 15	---	---	---	---	---
HKR-03*	10.8 / 12.5	19.3 / 21.4	20 / 25	---	---	---	---	---
HKR-05* / 05C*	17.2 / 19.8	27.2 / 30.5	30 / 35	---	---	---	---	---
HKR-06*	21.7 / 25.0	32.8 / 37.0	35 / 40	---	---	---	---	---
HKR-08* / -08C*	25.3 / 29.2	37.3 / 42.2	40 / 45	---	---	---	---	---
HKR-10* / -10C*	34.3 / 39.6	48.6 / 55.2	50 / 60	---	---	---	---	---
HKR-15CA, HKR-15CB	34.3 / 39.6	48.6 / 55.2	50 / 60	17.2 / 19.8	21.4 / 24.7	25 / 25	70/80	80 / 90
HKA-20C*	34.3 / 39.6	48.6 / 55.2	50 / 60	34.3 / 39.6	42.9 / 49.5	45 / 50	92/105	100 / 110

<sup>1</sup> Minimum Circuit Ampacity @ 208 / 240 V

<sup>2</sup> Maximum Overcurrent Protection Device @ 208 / 240 V

\* Revision level that may or may not be designated

C = Circuit Breaker Option      CA is for 208V and CB is for 240V

^ Heat Kit requires three-phase power supply

--- indicates Not Required

Note: All HKR ampacities noted above include air handler motor amps, excluding three-phase models.

## AIR HANDLER ELECTRICAL DATA — MBR

MODEL & HEAT KIT USAGE	CIRCUIT 1			CIRCUIT 2			SINGLE-POINT KIT	
	HEATER AMPS	MCA <sup>1</sup>	MOP <sup>2</sup>	HEATER AMPS	MCA <sup>1</sup>	MOP <sup>2</sup>	MCA <sup>1</sup>	MOP <sup>2</sup>
<b>MBR0800AA-1 **</b>	0 / 0	1.9 / 1.9	15 / 15	---	---	---	---	---
HKR-03*	10.8 / 12.5	15 / 17	20 / 20	---	---	---	---	---
HKR-05* / 05C*	17.1 / 19.8	23 / 26	30 / 30	---	---	---	---	---
HKR-06*	21.6 / 25.0	29 / 33	40 / 40	---	---	---	---	---
HKR-08* / -08C*	25.3 / 29.2	33 / 38	40 / 40	---	---	---	---	---
HKR-10* / -10C*	34.3 / 39.6	44 / 51	60 / 60	---	---	---	---	---
<b>MBR1200AA-1 **</b>	0 / 0	3.0 / 3.0	15 / 15	---	---	---	---	---
HKR-03*	10.8 / 12.5	16 / 18	20 / 20	---	---	---	---	---
HKR-05* / 05C*	17.1 / 19.8	24 / 27	40 / 40	---	---	---	---	---
HKR-06*	21.6 / 25.0	29 / 34	40 / 40	---	---	---	---	---
HKR-08* / -08C*	25.3 / 29.2	34 / 39	40 / 40	---	---	---	---	---
HKR-10* / -10C*	34.3 / 39.6	45 / 52	60 / 60	---	---	---	---	---
HKA-15C*	34.3 / 39.6	45 / 52	60 / 60	17.2 / 19.8	22 / 25	30 / 30	67/77	70 / 80
HKA-20C*	34.3 / 39.6	45 / 52	60 / 60	34.3 / 39.6	43 / 50	60 / 60	89/102	90 / 110
^HKR3-15*	0 / 0	3.0 / 3.0	15 / 15	31.2 / 36.1	39 / 45	60 / 60	---	---
^HKR3-20*	0 / 0	3.0 / 3.0	15 / 15	40.6 / 46.9	51 / 59	60 / 60	---	---
<b>MBR1600AA-1 **</b>	0 / 0	3.8 / 3.8	15 / 15	---	---	---	---	---
HKR-03*	10.8 / 12.5	17 / 19	20 / 20	---	---	---	---	---
HKR-05* / 05C*	17.1 / 19.8	24 / 28	40 / 40	---	---	---	---	---
HKR-06*	21.6 / 25.0	30 / 34	40 / 40	---	---	---	---	---
HKR-08* / -08C*	25.3 / 29.2	35 / 39	40 / 40	---	---	---	---	---
HKR-10* / -10C*	34.3 / 39.6	46 / 53	60 / 60	---	---	---	---	---
HKA-15C*	34.3 / 39.6	46 / 53	60 / 60	17.2 / 19.8	22 / 25	30 / 30	68/78	70 / 80
HKA-20C*	34.3 / 39.6	46 / 53	60 / 60	34.3 / 39.6	43 / 50	60 / 60	90/103	90 / 110
^HKR3-15*	0 / 0	3.8 / 3.8	15 / 15	31.26 / 36.1	39 / 45	60 / 60	---	---
^HKR3-20*	0 / 0	3.8 / 3.8	15 / 15	40.6 / 46.9	51 / 59	60 / 60	---	---
<b>MBR2000AA-1 **</b>	0 / 0	4.9 / 4.9	15 / 15	---	---	---	---	---
HKR-03*	10.8 / 12.5	17 / 20	20 / 20	---	---	---	---	---
HKR-05* / 05C*	17.1 / 19.8	25 / 29	40 / 40	---	---	---	---	---
HKR-06*	21.6 / 25.0	31 / 35	40 / 40	---	---	---	---	---
HKR-08* / -08C*	25.3 / 29.2	36 / 40	60 / 60	---	---	---	---	---
HKR-10* / -10C*	34.3 / 39.6	47 / 53	60 / 60	---	---	---	---	---
HKA-15C*	34.3 / 39.6	47 / 53	60 / 60	17.2 / 19.8	22 / 25	30 / 30	69/79	70 / 80
HKA-20C*	34.3 / 39.6	47 / 53	60 / 60	34.3 / 39.6	43 / 50	60 / 60	91/104	100 / 110
^HKR3-15*	0 / 0	4.9 / 4.9	15 / 15	31.2 / 36.1	39 / 45	60 / 60	---	---
^HKR3-20*	0 / 0	4.9 / 4.9	15 / 15	40.6 / 46.9	51 / 59	60 / 60	---	---

<sup>1</sup> Minimum Circuit Ampacity @ 208 / 240 V

<sup>2</sup> Maximum Overcurrent Protection Device @ 208 / 240 V

\* Revision level that may or may not be designated

C = Circuit Breaker Option CA is for 208V and CB is for 240V

^ Heat Kit requires three-phase power supply

--- indicates Not Required

Note: All HKR ampacities noted above include air handler motor amps, excluding three-phase models.

## ELECTRICAL DATA FOR GPC “H” SERIES PACKAGED UNITS (BLOWER ONLY, HEAT MODE)

MODEL AND HEAT KIT USAGE	CIRCUIT #1		CIRCUIT #2		ACTUAL kW / BTU@ 240V
	MCA <sup>1</sup>	MOP <sup>2</sup>	MCA <sup>1</sup>	MOP <sup>2</sup>	
<b>GPC1324H41**</b>	1.9	---	---	---	---
HKR-05*, HKR-05C*	21 / 25	25 / 25	---	---	4.75 / 16,200
HKR-08*, HKR-08C*	32 / 36	35 / 40	---	---	7 / 23,800
HKR-10*, HKR-10C*	43 / 49	45 / 50	---	---	9.5 / 32,400
<b>GPC1330H41**</b>	2.3	---	---	---	---
HKR-05*, HKR-05C*	21 / 25	25 / 25	---	---	4.75 / 16,200
HKR-08*, HKR-08C*	32 / 36	35 / 40	---	---	7 / 23,800
HKR-10*, HKR-10C*	43 / 49	45 / 50	---	---	9.5 / 32,400
HKP-15C*	43 / 49	45 / 50	21 / 25	25 / 25	14.25 / 48,600
<b>GPC1336H41**</b>	2.3	---	---	---	---
HKR-05*, HKR-05C*	21 / 25	25 / 25	---	---	4.75 / 16,200
HKR-08*, HKR-08C*	32 / 36	35 / 40	---	---	7 / 23,800
HKR-10*, HKR-10C*	43 / 49	45 / 50	---	---	9.5 / 32,400
HKP-15C*	43 / 49	45 / 50	21 / 25	25 / 25	14.25 / 48,600
<b>GPC1342H41**</b>	3.6	---	---	---	---
HKR-05*, HKR-05C*	21 / 25	25 / 25	---	---	4.75 / 16,200
HKR-08*, HKR-08C*	32 / 36	35 / 40	---	---	7 / 23,800
HKR-10*, HKR-10C*	43 / 49	45 / 50	---	---	9.5 / 32,400
HKP-15C*	43 / 49	45 / 50	21 / 25	25 / 25	14.25 / 48,600
HKP-20C*	43 / 49	45 / 50	43 / 49	45 / 50	19.0 / 64,800
<b>GPC1349H41**</b>	3.6	---	---	---	---
HKR-05*, HKR-05C*	21 / 25	25 / 25	---	---	4.75 / 16,200
HKR-08*, HKR-08C*	32 / 36	35 / 40	---	---	7 / 23,800
HKR-10*, HKR-10C*	43 / 49	45 / 50	---	---	9.5 / 32,400
HKP-15C*	43 / 49	45 / 50	21 / 25	25 / 25	14.25 / 48,600
HKP-20C*	43 / 49	45 / 50	43 / 49	45 / 50	19.0 / 64,800
<b>GPC1360H41**</b>	7.5	---	---	---	---
HKR-05*, HKR-05C*	21 / 25	25 / 25	---	---	4.75 / 16,200
HKR-08*, HKR-08C*	32 / 36	35 / 40	---	---	7 / 23,800
HKR-10*, HKR-10C*	43 / 49	45 / 50	---	---	9.5 / 32,400
HKP-15C*	43 / 49	45 / 50	21 / 25	25 / 25	14.25 / 48,600
HKP-20C*	43 / 49	45 / 50	43 / 49	45 / 50	19.0 / 64,800

<sup>1</sup> Minimum Circuit Ampacity @ 208 / 240 V

<sup>2</sup> Maximum Overcurrent Protection Device @ 208 / 240 V

\* Revision level that may or may not be designated

C Circuit breaker option

^ Heat Kit requires three-phase power supply

**NOTE:** HKP-15C\* and HKP-20C\* replace HKR-15C and HKR-20C respectively to meet new UL1995 requirements.

## ELECTRICAL DATA FOR GPC “H” SERIES PACKAGED UNITS (BLOWER ONLY, HEAT MODE)

MODEL AND HEAT KIT USAGE	CIRCUIT #1		CIRCUIT #2		ACTUAL kW / BTU@ 240V
	MCA <sup>1</sup>	MOP <sup>2</sup>	MCA <sup>1</sup>	MOP <sup>2</sup>	
<b>GPC1424H41**</b>	1.9	---	---	---	---
HKR-05*, HKR-05C*	21 / 25	25 / 25	---	---	4.75 / 16,200
HKR-08*, HKR-08C*	32 / 36	35 / 40	---	---	7 / 23,800
HKR-10*, HKR-10C*	43 / 49	45 / 50	---	---	9.5 / 32,400
<b>GPC1430H41**</b>	2.3	---	---	---	---
HKR-05*, HKR-05C*	21 / 25	25 / 25	---	---	4.75 / 16,200
HKR-08*, HKR-08C*	32 / 36	35 / 40	---	---	7 / 23,800
HKR-10*, HKR-10C*	43 / 49	45 / 50	---	---	9.5 / 32,400
HKP-15C*	43 / 49	45 / 50	21 / 25	25 / 25	14.25 / 48,600
<b>GPC1436H41**</b>	2.3	---	---	---	---
HKR-05*, HKR-05C*	21 / 25	25 / 25	---	---	4.75 / 16,200
HKR-08*, HKR-08C*	32 / 36	35 / 40	---	---	7 / 23,800
HKR-10*, HKR-10C*	43 / 49	45 / 50	---	---	9.5 / 32,400
HKP-15C*	43 / 49	45 / 50	21 / 25	25 / 25	14.25 / 48,600
<b>GPC1442H41**</b>	3.6	---	---	---	---
HKR-05*, HKR-05C*	21 / 25	25 / 25	---	---	4.75 / 16,200
HKR-08*, HKR-08C*	32 / 36	35 / 40	---	---	7 / 23,800
HKR-10*, HKR-10C*	43 / 49	45 / 50	---	---	9.5 / 32,400
HKP-15C*	43 / 49	45 / 50	21 / 25	25 / 25	14.25 / 48,600
HKP-20C*	43 / 49	45 / 50	43 / 49	45 / 50	19.0 / 64,800
<b>GPC1448H41**</b>	3.6	---	---	---	---
HKR-05*, HKR-05C*	21 / 25	25 / 25	---	---	4.75 / 16,200
HKR-08*, HKR-08C*	32 / 36	35 / 40	---	---	7 / 23,800
HKR-10*, HKR-10C*	43 / 49	45 / 50	---	---	9.5 / 32,400
HKP-15C*	43 / 49	45 / 50	21 / 25	25 / 25	14.25 / 48,600
HKP-20C*	43 / 49	45 / 50	43 / 49	45 / 50	19.0 / 64,800
<b>GPC1460H41**</b>	7.5	---	---	---	---
HKR-05*, HKR-05C*	21 / 25	25 / 25	---	---	4.75 / 16,200
HKR-08*, HKR-08C*	32 / 36	35 / 40	---	---	7 / 23,800
HKR-10*, HKR-10C*	43 / 49	45 / 50	---	---	9.5 / 32,400
HKP-15C*	43 / 49	45 / 50	21 / 25	25 / 25	14.25 / 48,600
HKP-20C*	43 / 49	45 / 50	43 / 49	45 / 50	19.0 / 64,800

<sup>1</sup> Minimum Circuit Ampacity @ 208 / 240 V

<sup>2</sup> Maximum Overcurrent Protection Device @ 208 / 240 V

\* Revision level that may or may not be designated

C Circuit breaker option

^ Heat Kit requires three-phase power supply

**NOTE:** HKP-15C\* and HKP-20C\* replace HKR-15C and HKR-20C respectively to meet new UL1995 requirements.

## ELECTRICAL DATA FOR GPC “M” SERIES PACKAGED UNITS (BLOWER ONLY, HEAT MODE)

MODEL AND HEAT KIT USAGE	CIRCUIT #1		CIRCUIT #2		ACTUAL kW / BTU@ 240V
	MCA <sup>1</sup>	MOP <sup>2</sup>	MCA <sup>1</sup>	MOP <sup>2</sup>	
<b>GPC1336M41**</b>	1.9	---	---	---	---
HKR-05*, HKR-05C*	21 / 25	25 / 25	---	---	4.75 / 16,200
HKR-08*, HKR-08C*	32 / 36	35 / 40	---	---	7.0 / 23,800
HKR-10*, HKR-10C*	43 / 49	45 / 50	---	---	9.5 / 32,400
HKP-15C*	43 / 49	45 / 50	21 / 25	25 / 25	14.25 / 48,600
<b>GPC1348M41**</b>	7.3	---	---	---	---
HKR-05*, HKR-05C*	21 / 25	25 / 25	---	---	4.75 / 16,200
HKR-08*, HKR-08C*	32 / 36	35 / 40	---	---	7.0 / 23,800
HKR-10*, HKR-10C*	43 / 49	45 / 50	---	---	9.5 / 32,400
HKP-15C*	43 / 49	45 / 50	21 / 25	25 / 25	14.25 / 48,600
HKP-20C*	43 / 49	45 / 50	43 / 49	45 / 50	19.0 / 64,800
<b>GPC1360M41**</b>	9.5	---	---	---	---
HKR-05*, HKR-05C*	21 / 25	25 / 25	---	---	4.75 / 16,200
HKR-08*, HKR-08C*	32 / 36	35 / 40	---	---	7.0 / 23,800
HKR-10*, HKR-10C*	43 / 49	45 / 50	---	---	9.5 / 32,400
HKP-15C*	43 / 49	45 / 50	21 / 25	25 / 25	14.25 / 48,600
HKP-20C*	43 / 49	45 / 50	43 / 49	45 / 50	19.0 / 64,800

<sup>1</sup> Minimum Circuit Ampacity @ 208 / 240 V

<sup>2</sup> Maximum Overcurrent Protection Device @ 208 / 240 V

\* Revision level that may or may not be designated

C Circuit breaker option

^ Heat Kit requires three-phase power supply

**NOTE:** HKP-15C\* and HKP-20C\* replace HKR-15C and HKR-20C respectively to meet new UL1995 requirements.

## ELECTRICAL DATA FOR GPC “M” SERIES PACKAGED UNITS (BLOWER ONLY, HEAT MODE)

MODEL AND HEAT KIT USAGE	CIRCUIT #1		CIRCUIT #2		ACTUAL KW / BTU@ 240V
	MCA <sup>1</sup>	MOP <sup>2</sup>	MCA <sup>1</sup>	MOP <sup>2</sup>	
<b>GPC1524M41</b>	2.4	---	---	---	---
HKR-05*, HKR-05C*	21 / 25	25 / 25	---	---	4.75 / 16,200
HKR-08*, HKR-08C*	32 / 36	35 / 40	---	---	7.00 / 23,800
HKR-10*, HKR-10C*	43 / 49	45 / 50	---	---	9.50 / 32,400
<b>GPC1530M41</b>	2.4	---	---	---	---
HKR-05*, HKR-05C*	21 / 25	25 / 25	---	---	4.75 / 16,200
HKR-08*, HKR-08C*	32 / 36	35 / 40	---	---	7.0 / 23,800
HKR-10*, HKR-10C*	43 / 49	45 / 50	---	---	9.5 / 32,400
HKP-15C*	43 / 49	45 / 50	21 / 25	25 / 25	14.25 / 48,600
<b>GPC1536M41</b>	2.4	---	---	---	---
HKR-05*, HKR-05C*	21 / 25	25 / 25	---	---	4.75 / 16,200
HKR-08*, HKR-08C*	32 / 36	35 / 40	---	---	7.00 / 23,800
HKR-10*, HKR-10C*	43 / 49	45 / 50	---	---	9.50 / 32,400
HKP-15C*	43 / 49	45 / 50	21 / 25	25 / 25	14.25 / 48,600
<b>GPC1542M41</b>	3.6	---	---	---	---
HKR-05*, HKR-05C*	21 / 25	25 / 25	---	---	4.75 / 16,200
HKR-08*, HKR-08C*	32 / 36	35 / 40	---	---	7.0 / 23,800
HKR-10*, HKR-10C*	43 / 49	45 / 50	---	---	9.5 / 32,400
HKP-15C*	43 / 49	45 / 50	21 / 25	25 / 25	14.25 / 48,600
<b>GPC1548M41</b>	3.6	---	---	---	---
HKR-05*, HKR-05C*	21 / 25	25 / 25	---	---	4.75 / 16,200
HKR-08*, HKR-08C*	32 / 36	35 / 40	---	---	7.00 / 23,800
HKR-10*, HKR-10C*	43 / 49	45 / 50	---	---	9.50 / 32,400
HKP-15C*	43 / 49	45 / 50	21 / 25	25 / 25	14.25 / 48,600
HKP-20C*	43 / 49	45 / 50	43 / 49	45 / 50	19.0 / 64,800

<sup>1</sup> Minimum Circuit Ampacity @ 208 / 240 V

<sup>2</sup> Maximum Overcurrent Protection Device @ 208 / 240 V

\* Revision level that may or may not be designated

C Circuit breaker option

^ Heat Kit requires three-phase power supply

**NOTE:** HKP-15C\* and HKP-20C\* replace HKR-15C and HKR-20C respectively to meet new UL1995 requirements.



## ELECTRICAL DATA FOR GPH “H” SERIES PACKAGED UNITS (BLOWER ONLY, HEAT MODE)

MODEL AND HEAT KIT USAGE	CIRCUIT #1		CIRCUIT #2		ACTUAL KW / BTU@ 240V
	MCA <sup>1</sup>	MOP <sup>2</sup>	MCA <sup>1</sup>	MOP <sup>2</sup>	
<b>GPH1324H41**</b>	1.9	---	---	---	---
HKR-05*, HKR-05C*	21 / 25	25 / 25	---	---	4.75 / 16,200
HKR-08*, HKR-08C*	32 / 36	35 / 40	---	---	7 / 23,800
HKR-10*, HKR-10C*	43 / 49	45 / 50	---	---	9.5 / 32,400
<b>GPH1330H41**</b>	2.3	---	---	---	---
HKR-05*, HKR-05C*	21 / 25	25 / 25	--	--	4.75 / 16,200
HKR-08*, HKR-08C*	32 / 36	35 / 40	--	--	7 / 23,800
HKR-10*, HKR-10C*	43 / 49	45 / 50	--	--	9.5 / 32,400
HKP-15C*	43 / 49	45 / 50	21 / 25	25 / 25	14.25 / 48,600
<b>GPH1336H41**</b>	2.3	---	---	---	---
HKR-05*, HKR-05C*	21 / 25	25 / 25	---	---	4.75 / 16,200
HKR-08*, HKR-08C*	32 / 36	35 / 40	---	---	7 / 23,800
HKR-10*, HKR-10C*	43 / 49	45 / 50	---	---	9.5 / 32,400
HKP-15C*	43 / 49	45 / 50	21 / 25	25 / 25	14.25 / 48,600
<b>GPH1342H41**</b>	3.6	---	---	---	---
HKR-05*, HKR-05C*	21 / 25	25 / 25	--	--	4.75 / 16,200
HKR-08*, HKR-08C*	32 / 36	35 / 40	--	--	7 / 23,800
HKR-10*, HKR-10C*	43 / 49	45 / 50	--	--	9.5 / 32,400
HKP-15C*	43 / 49	45 / 50	21 / 25	25 / 25	14.25 / 48,600
HKP-20C*	43 / 49	45 / 50	43 / 49	45 / 50	19.0 / 64,800
<b>GPH1348H41**</b>	3.6	---	---	---	---
HKR-05*, HKR-05C*	21 / 25	25 / 25	---	---	4.75 / 16,200
HKR-08*, HKR-08C*	32 / 36	35 / 40	---	---	7 / 23,800
HKR-10*, HKR-10C*	43 / 49	45 / 50	---	---	9.5 / 32,400
HKP-15C*	43 / 49	45 / 50	21 / 25	25 / 25	14.25 / 48,600
HKP-20C*	43 / 49	45 / 50	43 / 49	45 / 50	19.0 / 64,800
<b>GPH1360H41**</b>	7.5	---	---	---	---
HKR-05*, HKR-05C*	21 / 25	25 / 25	---	---	4.75 / 16,200
HKR-08*, HKR-08C*	32 / 36	35 / 40	---	---	7 / 23,800
HKR-10*, HKR-10C*	43 / 49	45 / 50	---	---	9.5 / 32,400
HKP-15C*	43 / 49	45 / 50	21 / 25	25 / 25	14.25 / 48,600
HKP-20C*	43 / 49	45 / 50	43 / 49	45 / 50	19.0 / 64,800

<sup>1</sup> Minimum Circuit Ampacity @ 208 / 240 V

<sup>2</sup> Maximum Overcurrent Protection Device @ 208 / 240 V

\* Revision level that may or may not be designated

C Circuit breaker option

^ Heat Kit requires three-phase power supply

**NOTE:** HKP-15C\* and HKP-20C\* replace HKR-15C and HKR-20C respectively to meet new UL1995 requirements.

## ELECTRICAL DATA FOR GPH “H” SERIES PACKAGED UNITS (BLOWER ONLY, HEAT MODE)

MODEL AND HEAT KIT USAGE	CIRCUIT #1		CIRCUIT #2		ACTUAL KW / BTU@ 240V
	MCA <sup>1</sup>	MOP <sup>2</sup>	MCA <sup>1</sup>	MOP <sup>2</sup>	
<b>GPH1424H41A*</b>	1.9	---	---	---	---
HKR-05*, HKR-05C*	21 / 25	25 / 25	---	---	4.75 / 16,200
HKR-08*, HKR-08C*	32 / 36	35 / 40	---	---	7 / 23,800
HKR-10*, HKR-10C*	43 / 49	45 / 50	---	---	9.5 / 32,400
<b>GPH1430H41A*</b>	2.3	---	---	---	---
HKR-05*, HKR-05C*	21 / 25	25 / 25	---	---	4.75 / 16,200
HKR-08*, HKR-08C*	32 / 36	35 / 40	---	---	7 / 23,800
HKR-10*, HKR-10C*	43 / 49	45 / 50	---	---	9.5 / 32,400
HKP-15C*	43 / 49	45 / 50	21 / 25	25 / 25	14.25 / 48,600
<b>GPH1436H41A*</b>	2.3	---	---	---	---
HKR-05*, HKR-05C*	21 / 25	25 / 25	---	---	4.75 / 16,200
HKR-08*, HKR-08C*	32 / 36	35 / 40	---	---	7 / 23,800
HKR-10*, HKR-10C*	43 / 49	45 / 50	---	---	9.5 / 32,400
HKP-15C*	43 / 49	45 / 50	21 / 25	25 / 25	14.25 / 48,600
<b>GPH1442H41A*</b>	3.6	---	---	---	---
HKR-05*, HKR-05C*	21 / 25	25 / 25	---	---	4.75 / 16,200
HKR-08*, HKR-08C*	32 / 36	35 / 40	---	---	7 / 23,800
HKR-10*, HKR-10C*	43 / 49	45 / 50	---	---	9.5 / 32,400
HKP-15C*	43 / 49	45 / 50	21 / 25	25 / 25	14.25 / 48,600
HKP-20C*	43 / 49	45 / 50	43 / 49	45 / 50	19.0 / 64,800
<b>GPH1348H41A*</b>	3.6	---	---	---	---
HKR-05*, HKR-05C*	21 / 25	25 / 25	---	---	4.75 / 16,200
HKR-08*, HKR-08C*	32 / 36	35 / 40	---	---	7 / 23,800
HKR-10*, HKR-10C*	43 / 49	45 / 50	---	---	9.5 / 32,400
HKP-15C*	43 / 49	45 / 50	21 / 25	25 / 25	14.25 / 48,600
HKP-20C*	43 / 49	45 / 50	43 / 49	45 / 50	19.0 / 64,800
<b>GPH1460H41A*</b>	7.5	---	---	---	---
HKR-05*, HKR-05C*	21 / 25	25 / 25	---	---	4.75 / 16,200
HKR-08*, HKR-08C*	32 / 36	35 / 40	---	---	7 / 23,800
HKR-10*, HKR-10C*	43 / 49	45 / 50	---	---	9.5 / 32,400
HKP-15C*	43 / 49	45 / 50	21 / 25	25 / 25	14.25 / 48,600
HKP-20C*	43 / 49	45 / 50	43 / 49	45 / 50	19.0 / 64,800

<sup>1</sup> Minimum Circuit Ampacity @ 208 / 240 V

<sup>2</sup> Maximum Overcurrent Protection Device @ 208 / 240 V

\* Revision level that may or may not be designated

C Circuit breaker option

^ Heat Kit requires three-phase power supply

**NOTE:** HKP-15C\* and HKP-20C\* replace HKR-15C and HKR-20C respectively to meet new UL1995 requirements.

## ELECTRICAL DATA FOR GPH “M” SERIES PACKAGED UNITS (BLOWER ONLY, HEAT MODE)

MODEL AND HEAT KIT USAGE	CIRCUIT #1		CIRCUIT #2		ACTUAL kW / BTU@ 240V
	MCA <sup>1</sup>	MOP <sup>2</sup>	MCA <sup>1</sup>	MOP <sup>2</sup>	
<b>GPH1324M41**</b>	1.9	---	---	---	---
HKR-05*, HKR-05C*	21 / 25	25 / 25	---	---	4.75 / 16,200
HKR-08*, HKR-08C*	32 / 36	35 / 40	---	---	7.0 / 23,800
HKR-10*, HKR-10C*	43 / 49	45 / 50	---	---	9.5 / 32,400
<b>GPH1330M41**</b>	1.9	---	---	---	---
HKR-05*, HKR-05C*	21 / 25	25 / 25	---	---	4.75 / 16,200
HKR-08*, HKR-08C*	32 / 36	35 / 40	---	---	7.0 / 23,800
HKR-10*, HKR-10C*	43 / 49	45 / 50	---	---	9.5 / 32,400
HKP-15C*	43 / 49	45 / 50	21 / 25	25 / 25	14.25 / 48,600
<b>GPH1336M41**</b>	1.9	---	---	---	---
HKR-05*, HKR-05C*	21 / 25	25 / 25	---	---	4.75 / 16,200
HKR-08*, HKR-08C*	32 / 36	35 / 40	---	---	7.0 / 23,800
HKR-10*, HKR-10C*	43 / 49	45 / 50	---	---	9.5 / 32,400
HKP-15C*	43 / 49	45 / 50	21 / 25	25 / 25	14.25 / 48,600
<b>GPH1342M41**</b>	3.6	---	---	---	---
HKR-05*, HKR-05C*	21 / 25	25 / 25	---	---	4.75 / 16,200
HKR-08*, HKR-08C*	32 / 36	35 / 40	---	---	7.0 / 23,800
HKR-10*, HKR-10C*	43 / 49	45 / 50	---	---	9.5 / 32,400
HKP-15C*	43 / 49	45 / 50	21 / 25	25 / 25	14.25 / 48,600
<b>GPH1348M41**</b>	7.3	---	---	---	---
HKR-05*, HKR-05C*	21 / 25	25 / 25	---	---	4.75 / 16,200
HKR-08*, HKR-08C*	32 / 36	35 / 40	---	---	7.0 / 23,800
HKR-10*, HKR-10C*	43 / 49	45 / 50	---	---	9.5 / 32,400
HKP-15C*	43 / 49	45 / 50	21 / 25	25 / 25	14.25 / 48,600
HKP-20C*	43 / 49	45 / 50	43 / 49	45 / 50	19.0 / 64,800
<b>GPH1360M41**</b>	9.5	---	---	---	---
HKR-05*, HKR-05C*	21 / 25	25 / 25	---	---	4.75 / 16,200
HKR-08*, HKR-08C*	32 / 36	35 / 40	---	---	7.0 / 23,800
HKR-10*, HKR-10C*	43 / 49	45 / 50	---	---	9.5 / 32,400
HKP-15C*	43 / 49	45 / 50	21 / 25	25 / 25	14.25 / 48,600
HKP-20C*	43 / 49	45 / 50	43 / 49	45 / 50	19.0 / 64,800

<sup>1</sup> Minimum Circuit Ampacity @ 208 / 240 V

<sup>2</sup> Maximum Overcurrent Protection Device @ 208 / 240 V

\* Revision level that may or may not be designated

C Circuit breaker option

^ Heat Kit requires three-phase power supply

**NOTE:** HKP-15C\* and HKP-20C\* replace HKR-15C and HKR-20C respectively to meet new UL1995 requirements.

## ELECTRICAL DATA FOR GPH “M” SERIES PACKAGED UNITS (BLOWER ONLY, HEAT MODE)

MODEL AND HEAT KIT USAGE	CIRCUIT #1		CIRCUIT #2		ACTUAL KW / BTU@ 240V
	MCA <sup>1</sup>	MOP <sup>2</sup>	MCA <sup>1</sup>	MOP <sup>2</sup>	
<b>GPH1524M41A*</b>	5.4	---	---	---	---
HKR-05*, HKR-05C*	21 / 25	25 / 25	---	---	4.75 / 16,200
HKR-08*, HKR-08C*	32 / 36	35 / 40	---	---	7.0 / 23,800
HKR-10*, HKR-10C*	43 / 49	45 / 50	---	---	9.5 / 32,400
<b>GPH1530M41A*</b>	5.4	---	---	---	---
HKR-05*, HKR-05C*	21 / 25	25 / 25	---	---	4.75 / 16,200
HKR-08*, HKR-08C*	32 / 36	35 / 40	---	---	7.0 / 23,800
HKR-10*, HKR-10C*	43 / 49	45 / 50	---	---	9.5 / 32,400
HKP-15C*	43 / 49	45 / 50	21 / 25	25 / 25	14.25 / 48,600
<b>GPH1536M41A*</b>	5.4	---	---	---	---
HKR-05*, HKR-05C*	21 / 25	25 / 25	---	---	4.75 / 16,200
HKR-08*, HKR-08C*	32 / 36	35 / 40	---	---	7.0 / 23,800
HKR-10*, HKR-10C*	43 / 49	45 / 50	---	---	9.5 / 32,400
HKP-15C*	43 / 49	45 / 50	21 / 25	25 / 25	14.25 / 48,600
<b>GPH1543M41A*</b>	3.6	---	---	---	---
HKR-05*, HKR-05C*	21 / 25	25 / 25	---	---	4.75 / 16,200
HKR-08*, HKR-08C*	32 / 36	35 / 40	---	---	7.0 / 23,800
HKR-10*, HKR-10C*	43 / 49	45 / 50	---	---	9.5 / 32,400
HKP-15C*	43 / 49	45 / 50	21 / 25	25 / 25	14.25 / 48,600
<b>GPH1549M41A*</b>	3.6	---	---	---	---
HKR-05*, HKR-05C*	21 / 25	25 / 25	---	---	4.75 / 16,200
HKR-08*, HKR-08C*	32 / 36	35 / 40	---	---	7.00 / 23,800
HKR-10*, HKR-10C*	43 / 49	45 / 50	---	---	9.50 / 32,400
HKP-15C*	43 / 49	45 / 50	21 / 25	25 / 25	14.25 / 48,600
HKP-20C*	43 / 49	45 / 50	43 / 49	45 / 50	19.0 / 64,800
<b>GPH1560M41A*</b>	8.8	---	---	---	---
HKR-05*, HKR-05C*	21 / 25	25 / 25	---	---	4.75 / 16,200
HKR-08*, HKR-08C*	32 / 36	35 / 40	---	---	7.0 / 23,800
HKR-10*, HKR-10C*	43 / 49	45 / 50	---	---	9.5 / 32,400
HKP-15C*	43 / 49	45 / 50	21 / 25	25 / 25	14.25 / 48,600
HKP-20C*	43 / 49	45 / 50	43 / 49	45 / 50	19.0 / 64,800

<sup>1</sup> Minimum Circuit Ampacity @ 208 / 240 V

<sup>2</sup> Maximum Overcurrent Protection Device @ 208 / 240 V

\* Revision level that may or may not be designated

C Circuit breaker option

^ Heat Kit requires three-phase power supply

**NOTE:** HKP-15C\* and HKP-20C\* replace HKR-15C and HKR-20C respectively to meet new UL1995 requirements.