



SPECIFICATIONS FOR ROUND FRONT TOILETS

Product Features

- 1.28 GPF (4.8 LPF) HET (High Efficiency Toilet) toilet
- Round bowl
- White glazed finish
- 2" minimum fully glazed trapway
- 12" rough-in
- Water surface area: 8" x 6-1/2"
- Tank 270906 includes the following:
 - Lid
 - Anti-siphon fill valve
 - 3" standard flapper
 - Chrome-plated tank lever
 - Brass tank-to-bowl bolts
 - Foam rubber spud gasket
- Bowl 270919 includes the following:
 - Color-matched bolt caps

Compliance

- Meets or exceeds ASME A112.19.2

Listings

- IAPMO (International Association of Plumbing & Mechanical Officials)
- cUPC (Uniform Plumbing Code & Canadian Uniform Plumbing Code)
- EPA WaterSense Labeled
- MaP Flushing Performance Score: 1000 grams

Warranty

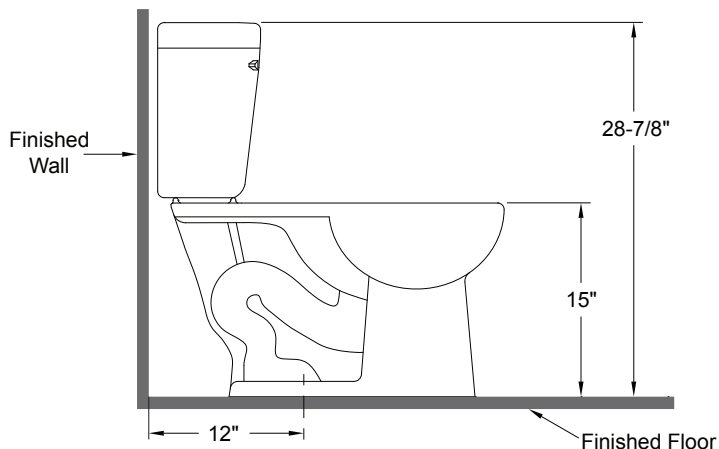
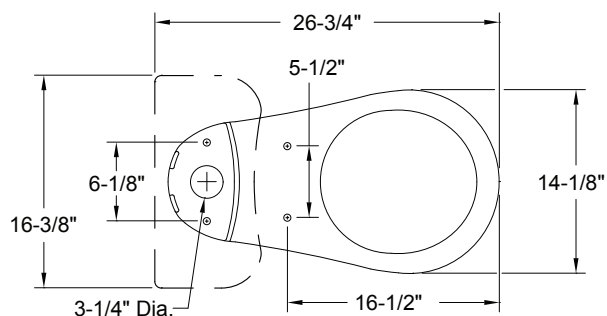
- 1-Year Limited Warranty
Refer to Premier warranty program for further details and restrictions.



Model

Tank	270906
Bowl	270919

1.28 GPF HET Toilet
Round Front
White
12" Rough-In



All dimensions are nominal

